



ART GALLERY SOCIETY OF NEW SOUTH WALES AN OVERVIEW 2016

For the year ended 31 December 2016

CONTENTS

President's Report 2016	3
The Year in Review	6
Patron and Life Governors	9
Councillors	9
Volunteer Guides	10
Community Ambassadors	11
Volunteer Task Force	12
Young Members	14
Collection Circle and Acknowledged Donors	16
Sponsors	22
Corporate Members	23
Society Staff	25
2016 Acquisitions	26

PRESIDENT'S REPORT 2016

The Art Gallery Society is an independent body with a proud and significant history of supporting the Art Gallery of New South Wales, dating back to its formation in 1953. It remains an independent association, partnering with the Gallery to deliver vibrant programs and events that enliven member engagement with art and the Gallery. Our goal is to attract new members while raising funds in support of the State's foremost art institution.

Based on a range of criteria, including the number of paid-up members; the level of member engagement in programs; high membership retention rate; membership benefits, and fund-raising for art acquisitions and other support, the Art Gallery Society is unique amongst museum membership organisations in Australia. Councillors are proud of this history and are committed to building on this legacy.

Appointment of Executive Director

The year began with the appointment of Ron Ramsey as Executive Director of the Society on 8th February 2016. Since taking up the role Ron Ramsey has largely been responsible for making important strides:-

- Re-invigorating a strong and positive working relationship with the Gallery.
- Maintaining the diverse range of stimulating member programs that continue to attract large appreciative audiences.
- Overseeing an increase in membership numbers – peaking at 28,277 individual members, with 3,473 new members joining in 2016.
- Steering the re-design of LOOK magazine, including it becoming a bi-monthly edition.
- Implementing a staff re-structure to improve efficiency.
- Overseeing the completion of a Memorandum of Understanding with the Gallery which looks to the future.

LOOK Magazine re-launch

Membership research has consistently shown that alongside the wonderful amenities of our Members Lounge the most valued benefit of membership is receiving LOOK magazine. LOOK was successfully re-launched in a new larger format, high quality bi-monthly edition on 25 October. The response from Members has been overwhelmingly positive.

Operational Review

Throughout the year, Council reviewed important aspects of the Society's operations. Senior AGS managers gave presentations to Council about their areas of responsibility, including programs, achievements and strategies for the future, on which Council deliberated. It was then decided that given we had a new President, Vice President, Treasurer, Executive Director and two new Councillors, and with the benefit of the AGS managers' information, it was timely for the Council to commission an independent review of the Society's operations.

Independent Review

In early September 2016 Council commissioned an independent efficiency review of the Society's operations from Deloitte, the leading business consulting and financial advisory firm. The Deloitte Review was presented to Council in late October 2016. The report identified strengths and weaknesses, and made recommendations. It identified the three most profitable areas of AGS activity were: membership, lectures and international tours.

Implementing Review recommendations

A key Deloitte recommendation was to merge the Society's Corporate Members Program with the Gallery's Corporate Development Division. This proposal would do away with unnecessary duplication and confusion resulting from two separate, competing corporate membership programs in support of a single institution.

The Society will continue to operate its own Corporate Sponsorship Program, maintaining and building relationships with current and potential sponsors of Society programs and events.

The Review also recommended a limited staff restructure to achieve greater efficiencies within the Society's operations, as well as a better use of members' funds. It recommended reducing the number of senior managers and creating one assistant director role, resulting in net savings in operating costs.

After due consideration of several options, Council unanimously endorsed the re-structure and proposed changes. The re-structure took place in February 2017 resulting in two senior manager positions being discontinued.

Memorandum of Understanding

The Art Gallery Society and the Art Gallery of New South Wales have reached an historic agreement, which affirms and formalises their 64 year partnership. This Memorandum of Understanding (MOU) clarifies the nature and benefits of the partnership and articulates a vision for the future.

The purpose of this first MOU is to build on the goodwill that exists between the Society and the Gallery. Importantly the MOU recognizes the Art Gallery Society as art institution's membership body; that it is independent and that its constitution and its name remain unchanged. The MOU also acknowledges the separate rights and responsibilities of both organisations, while outlining joint goals and protocols for projects and programs. These include:-

- Membership and audience growth strategies
- LOOK magazine
- Philanthropy and corporate programs
- Marketing and communications
- Programming, venue use and functions
- Volunteer co-ordination
- Intellectual property
- Financial support
- Membership services and facilities

Council believes the agreement has adequate flexibility to meet changing circumstances. It recognizes that changing circumstances can affect the implementation and objectives of the MOU.

The term of the MOU is a renewable three-year agreement. The Society has the protection of termination provisions, which it can initiate, and dispute resolution procedures to ensure the smooth implementation of the agreement.

Ultimately the MOU is a statement about the growth and development of the Art Gallery Society of New South Wales; its contribution to fulfilling the future vision of the Art Gallery of New South Wales, and the role the Society will play in that vision.

AGS Strategic Plan

Developing a new AGS strategic plan for the future of the membership organisation is a priority for Council. The strategic plan will mesh with those of the Art Gallery and Art Gallery Foundation, and will build on the findings of the Deloitte Review. Our aim is to increase and diversify memberships, continue to offer outstanding programs that engage members with art and the Gallery, and grow financial support for the Gallery. Work on the Strategic Plan commenced in March 2017 and

Support for the Gallery

The Society funded four works for the Gallery's collection in 2016. The principal acquisition being John Russell's *In the afternoon* 1891, an important Australian impressionist work, as well as *The glow of the city* 1929, depicting a glamorous flapper in front of a New York skyline by Australian-born Martin Lewis.

Two works were funded from the Dagmar Halas bequest fund: *Arums growing* 1927 by Grace Cossington Smith and a landscape *Through the trees Toongabbie* 1920 by Hilda Rix Nicholas.

Members contributing to the Collection Circle Acquisition Program donated a minimum of \$200 per year each. They are loyal donors and their names are listed below, starting on page 13. The total funding for acquisitions provided by the Society during the year, including the Dagmar Halas bequest contributions, amounted to \$545,791.

The Society's major support of the *Art After Hours* program has meant that Wednesday evenings are an energised and often youthful gathering of thousands of new and regular visitors eager to embrace a typically engaging and innovative program.

Similarly, the AGS' partnering with the exhibition *O'Keeffe, Preston and Cossington Smith: Making Modernism*, which broke the attendance record when displayed at Heide Museum of Modern Art, Melbourne (12 October 2016 – 19 February 2017), ensures the Society continues to enable members and the broader community to engage and interact with significant works of art. (*Making Modernism* will be presented at the Art Gallery of New South Wales 1 July – 2 October 2017)

2016 THE YEAR IN REVIEW

General Membership

2016 saw a growth figure of 1159 memberships. 2016 started with 16884 memberships and finished with 18043 memberships covering 28350 individuals. Overall renewal rates for General Memberships were 80.5%.

Membership staffing costs were down in 2016, with an increase in email generated online renewals and the streamlining of associated processing reducing the overall workload. The Society continued with its roll-out of a long-life smart membership card system, with new membership verification technology introduced at Member Exhibition Previews, the members lounge, Gallery shop and the exhibition ticketing desk.

The 2016 members Travel Draw achieved \$137,000, an increase of \$2,408 on the previous year. The Travel Draw was supported by Emirates, Arab Bank Australia, Taylors Wines, Faber-Castell Australia, Lindt Swiss Chocolates, Sofitel, Renaissance Tours, Paul Newton, Catapult, Platform Bausele, Defiance Gallery and Brett Mickan Design.

Corporate Development

The corporate membership program remained steady during a challenging economic and political year. At the end of 2016 the total number of corporate members stood at 162.

The generous sponsors who have continued to support various Society programs in 2016; including Brian Abel for sponsoring our workshops, Arab Bank Australia for sponsoring the Learning Curve Lecture Series, Artology for sponsoring the Resonate Concert Series, Clifford

Chance for sponsoring the Archibald Preview and End-of-Year Parties, Faber-Castell Australia for sponsoring the Kids Club, Philip Bacon Galleries for sponsoring the volunteers, Resimac Limited for sponsoring the Art Appreciation Lectures Series, Lindsay Yates and K.W. Doggett for sponsoring our printing and paper supplies and our long-standing wine sponsor Taylors Wines.

Programs and Events

45,557 people attended 411 paid members events in 2016. This does not include corporate evenings, members' exhibition viewings and world travel talks outside of Armchair Travel. 77% of bookings – 35,061 – came from course/lecture programs, which form only 32% of the number of all events.

Online bookings now make up more than 50% of bookings income, for the first time overtaking telephone bookings as the preferred method. Income from online bookings was the highest on record at \$628,608, a 23% increase on 2015.

Following the annual review of the previous year's program, some events that had dropped in capacity were phased out, and this saw average capacity rise to 87% - a 6% increase on 2015 and the highest in five years. On average 55% of events were completely sold out. Only five events, three of them Young Members, had to be cancelled, compared to eight the previous year.

Communications

Following a tender process, *Look* magazine a highly valued membership benefit was relaunched on 25 October. The new *Look* was officially launched with a larger format and page count and bi-monthly frequency. November-December was the first edition of the new *Look* which included Auguste Rodin's *The kiss* 1901-04 on the cover. Under the direction of editor John Saxby and deputy editor Sarah Couper, the new *Look* increased from 60 pages to 84 pages and included a number of new features, additional content and changes to design. Also included in the magazine is *At the Gallery*, a stand-alone guide to member events and Gallery programs. The *Look* Advisory Panel consisting of key Society and Gallery staff continued to meet on a regular basis to consult on future content and the review of publication options.

New production partner, Hardie Grant Media was given a broader brief and higher targets for advertising revenue per issue (\$65,000), which were exceeded for the November/December issue (\$70,673). With a circulation of more than 18,000 copies and a readership estimated to be two to three times that figure, *Look* remains a leader among art magazines in Australia.

Online communication The Society had a growing online presence in 2016 with its three regular email distribution marketing (eDM) channels to Gallery members: *Peek*, *Fuse* and *Corporate*.

Peek eDM, distributed on a fortnightly basis to all members who supply an email address, provides information on Gallery exhibitions and members' events, benefits and fundraising efforts as well as special offers and competitions. Total subscriber numbers are approximately 23,000 with an opening rate average of 40%, a click-through rate of 20% and a click-to-open (CTOR) rate of 50%.

Fuse eDM is distributed on fortnight monthly basis to Young Members, with a range of content directed to a younger age demographic of 18–40s. It had 9,500 subscribers with a CTOR average of 32%.

The *Corporate* eDM is distributed monthly to 1,100 subscribers among Corporate Members, with a CTOR average of 24%.

The Art Gallery of NSW distributes the *Artmail* eDM monthly to approximately 185,000 subscribers. The members are represented in the e-newsletter with a dedicated module to promote joining the Gallery, the benefits of membership, members' events and key fundraising campaigns such as the Collection Circle Acquisition Program and the members' Travel Draw.

Young Members

Young Members: A total of 27 events were held for young members in 2016, a decrease from 62 events in 2015. Bookings totalled 553 down from 1359 the previous year. The role of young members coordinator has remained vacant since mid-July 2016. Studio visits and gallery tours remained popular.

The committee led by president Peter Plustwik have been working on a strategy for 2017 with the focus being on community, connections and acquisitions.

Volunteers

The Art Gallery's four volunteer bodies – the Volunteer Guides, Task Force, Community Ambassadors and Young Member volunteers – have all grown out of the membership body and are integral to its role and its ethos. Their wonderful contributions are greatly appreciated by staff and visitors alike. For many Gallery visitors, volunteers are the welcoming face of the institution and of membership, but many do not realise the essential services they provide year round, through weekends and holidays, as well as in the evenings when special events take place.

The Society benefits directly from Task Force volunteers who staff the Society's Membership Desk, assist with behind the scenes program support; and provide a range of support in the Members Lounge. The Task Force volunteers added ticketing duties for exhibitions to their roster of duties and they enthusiastically took on the role. The Society was particularly grateful to the Task Force for their work on the members desk where they facilitated the recruitment 1381 new members. Young Members volunteers have greatly assisted the Society by mounting special events to encourage young Gallery visitors to join up.

In 2016 the responsibility for Volunteer Guides was transferred to the Gallery and provided guided tours of the permanent collections and temporary exhibitions for thousands of members, for the general public and for school groups. The Community Ambassadors provided tours in Mandarin, Cantonese, Japanese and Korean and engaged in outreach work in their respective communities.

Volunteers will always have a role to play at the Art Gallery. The Society and Gallery are working together to identify new opportunities for volunteers as the Society and the Gallery grow.

Brian Ladd
President, Art Gallery Society of New South Wales

PATRON

His Excellency General The Honourable David Hurley
AC DSC (Ret'd), Governor of New South Wales

HONORARY LIFE GOVERNORS

The Hon Bronwyn Bishop
Mr Peter Flick
Mr Raymond Kidd
Mrs Carolyn Ward

COUNCILLORS from April 2016

Brian Ladd PRESIDENT
Paula Latos-Valier VICE PRESIDENT
Brian Greenacre TREASURER
Anastasia Economou
Sue Dadswell
Jill Keyte
Edward Palmisano
Jo-Ann Smith
Ex-Officio
Dr Michael Brand
The Hon Ashley Dawson-Damer

IMMEDIATE PAST COUNCILLORS

Les Moseley (until April 2016)
Jackie De Diana (until April 2016)
Christopher Wokes (until July 2016)

HONORARY LAWYERS

Allens Linklater:

Gavin Smith
Valeska Bloch
Isabelle Guyot

VOLUNTEER GUIDES COMMITTEE 2016

GUIDES COORDINATOR

Pia Hughes

ASSISTANT GUIDES COORDINATOR

Jo-Ann Smith

ACCESS COORDINATOR

Jo-Ann Smith

CHILDREN'S GUIDES COORDINATOR

Christine Moulton

ASSISTANT CHILDREN'S GUIDES COORDINATOR

Samantha Tonkin

SECRETARY/ TREASURER

Choon Quek

COMMUNITY AMBASSADORS

COORDINATOR

Simon Chan

ASSISTANT COMMUNITY AMBASSADORS

COORDINATOR

Kazuko Chalker

LECTURE PROGRAMME COORDINATOR

Jenny Harrison

ASSISTANT LECTURE PROGRAMME COORDINATOR

Philippa Penman

VOLUNTEER GUIDES 2016

Amir, Dale

Angus, Jan

Anthony, Margaret

Antonopoulos, Yvonne

Archer, Robin

Atmore, Wendy

Batchelor, Lindy

Bathurst, Robyn

Baxter, Annabel

Bearman, Sue

Bird, Dale

Blacket, Pamela

Blackshaw, Rosalie

Bressan, Jan

Brodribb, Mary-Jane

Brown, Vicki

Cameron, Cathy

Campbell, Lisa

Church, Bella

Collins, Julie

Cullen, Sally

Cunningham, Margaret

Dauids, Lorraine

De Diana, Jackie

De Mestre, Mary

Dean, Anabel

Digby, Allan

Duggan, Anna

Elliott, Patricia

Ennis, Lorraine

Everett, Diane

Flick, Robyn

Fuller, Pam

Furniss, Caroline

Gardiner, Jenny

Greatorex, Deirdre

Gross, Alison

Halkyard, Alisa

Harrison, Eve

Harrison, Jennifer

Hawthorne, Juliet

Herron, Annie

Hickson, Catherine

Holmes, Helen

Hughes, Pia

Huxtable, Marie

Hyde, John

Jenkins, Chrissie

Knight, Pearl

Kowalski, Ira

Kreuter, Pat

Labone, Dorothea

Lilienthal, Shirley

Lou Gilbert, Mary

Ma, Susan

Mairs, Catherine

Marjoram, Susan

Marsh, Sandra

Massey, Joan

McClintock, Jann

McDonald, Ashley

McNally, Frances

McWilliam, Cherry

Mitchell, Susan	Presland, Caroline	Sutherland, Ann
Moseley, Les	Quek, Choon	Sutton, Jacqueline
Moult, Christine	Redelman, Judi	Sutton, Jennifer
Murphy, Maureen	Reed, Jenny	Swan, Susan
Northedge, Diana	Reede, Kate	Taylor, Mark
O'Donnell, Edwina	Reeves, Jan	Todd, Prue
Ottley, Dianne	Renham, Dilys	Tonkin, Samantha
Oyang, Angeline	Richardson, Peter	Tydd, Jan
Palmer, Mandy	Sayle, Pauline	Urwin, Susan
Payne, Wendy	Shea, Beverley	Warre, Cilla
Penman, Philippa	Smith, Jo-Ann	Wilson, Patricia
Poon, Erica	Stanton-Cook, Libby	Woodham, Anne
Porter, Penny	Still, Fiona	Young, Sally
Potten, Keith	Storch, Caroline	Zurnamer, Linda
Potts, Irene	Sullivan, Dorinda	

COMMUNITY AMBASSADORS 2016

Kyung-hwa Ahn	Betty Kim	Kaoru Murray
Kazuko Chalker	Mijurng Kim	Angeline Oyang
Liwanna Chan	Pearl Knight	Keiko Parsonson
Simon Chan	Linna Le Boursicot	Julia Tang
Wen-li Chen	Kyumi Lee	Irene Tseng
Seong Cho	Hoim Lee	Helen Wong
Daisy Hsu	Hyun Ju Lee	Min Hong Xiao
Vivian Huang	Minnie Liang	Sharon Xie
Hiromi Kamokasu	Su Jen Lin	Nahomi Yoshizawa
Elizabeth Kao	Jennifer Mok	

VOLUNTEER TASK FORCE COMMITTEE 2016

COORDINATOR
Sue Dadswell

ASSISTANT COORDINATOR
Judy Embrey

SECRETARY/TREASURER
Ruth Attwood

REGISTRAR
Lea Clarke

MEMBERS DESK ROSTER OFFICER
Judy Tribe

NEW MEMBERS OFFICER/ CONCIERGE
ROSTER OFFICER
Mary Grice

FUNCTIONS ROSTER OFFICER
Sandra Beesley

FAMILY ROOM ROSTER OFFICER
Georgina Gye

VOLUNTEER TASK FORCE MEMBERS January to December 2016

Adams, Dianne
Amm, Robin
Anderson, Jan
Anderson, Melanie
Apps, Julie
Archbold, Greta
Ashmore, Mara
Attwood, Ruth
Aveling, Meredith
Bain, Margot
Baines, Chris
Baldo, Julia
Barrett, Kaye
Bartholomaeus, John
Beesley, Sandra
Berlyn, Diana
Blomfield, Anne
Blythe, Georgina
Boyer, Lorraine
Brook, Valda
Buchanan, John
Bull, Geraldine
Carey, Jennifer
Carrel, Nelli
Casey, Mary
Charlton, Susan
Chinneck, Stephanie
Clarke, Annie
Clarke, Lea
Chiofalo, Maria
Curtis, Patricia

Dadswell, Susan
Darby, Beverley
De Valence, Francine
Dendle, Gail
Devine, Diane
Dodd, Ann
Doherty, John
Donsworth, June
Dubiel, Jutta
Duggan, Catherine
Elliott, Gordon
Embrey, Judy
Fairfax, Jean
Feher, Eva
Fergus, Coralie
Forsyth, Phillip
Gingell, Monique
Good, Phillip
Governor, Patricia
Greene, Maria
Grice, Mary
Gye, Georgina
Gough, Linda
Habel, Janette
Hagiwara, Aiko
Hancock, Sue
Hannon, Karen
Harrison-Latour, Ine
Hartigan, Susan
Hellier, Fran
Henderson, Ann

Hillier, Mary
Hunter, Madeline
Huxley, Joy
Jakubowski, Teresa
James, Patricia
Jennings, Felicita
John, Krystyna
Johnson, Maria
Jones, Nita
Joyce, Rhonnie
Kemp, Sue
Kenny, Vere
Khouri, Juliette
Knight, Ursula
Lademann, Triny
Lee, Brenda
Lyubomirsky, Laura
McPherson, Marlene
Malanos, Grace
Marshall, Margaret
Matkovich, Jane
McLellan, Glen
Mendelsohn, Emma
Menzies, John
Moxon, Hilary
Mulvey, Colleen
Nugent, Sandy
Osen, Ruth
Parker, Jenny
Pellizzer, Di
Preshaw, Judy

Pretty, Cynthia
Proudfoot, Judy
Puntigam, Marie
Rapaich, Zorica
Richardson, Deanna
Scutts, Luisa
Searle, Annette
Secombe, Rex
Shastri, Neerja
Sheehan, Cassie
Sommerville, Lesley
Sowell, Marilyn

Stefanek, Judith
Steilberg, May
Swane, Bonita
Swenson, Marsha
Symes, Margaret
Taylor, Anne
Tebb, Liz
Thom, Irene
Thompson, Roxanne
Tompkins, Susan
Tribe, Judith
Ure, Ursula

Vaculik, Lynda
Vellar, Adriana
Vickers, Margaret
Von Lucken, Beverley
Wai-Yee, Jeffrey
Wangmann, June
Warman, Norma
Watt, Jennifer
Wood, Jenni
Zampatti, Sergio

RESIGNED IN 2016

Arnall, Paula
Azar, Pamela
Du Feu, Barry
Gleeson, Shaun
Head, Lisa
Holland, Gloria
Richmond, Kate
Sansom, Maryanne
Watson, Marlene
Wilson, Joanne

YOUNG MEMBERS COMMITTEE 2016

PRESIDENT

Peter Plustwick

VICE PRESIDENT

Sarah Close

TREASURER

Brian Greenacre

SOCIAL MEDIA/COMMUNICATIONS

Christopher Murphy

VOLUNTEER COORDINATORS

Elizabeth Mora and Frederick McDonald

MEMBERSHIP

Brian Greenacre and Rebecca Mason

EVENTS

Sally Bevan, Marcel Julliard, Maude Pare Plante, Rosemary Nunes-Silva and Matt Wan

YOUNG MEMBERS VOLUNTEERS January to December 2016

Adamson, Louise

Ahern, Kate

Alvarez, Lorena

Anderson, Sherie

Antonopoulos, Alexios

Appleby, Leah

Armstrong, Kate

Arnall, Paula

Bainbrigge, Gemma

Balachova, Anastassia

Basso, Andres

Baudille, Domenico

Bauer, Yonas

Bolton, Olivia

Bosmat, Bosmat

Boyle, Phoebe

Brown, Andrea

Brown, Kate

Brun, Nicole

Bryant, James

Bryant, Rachel

Burns, David

Burt, Kate

Busby, Christina

Cabello, Andrea

Camenzuli, Bernardette

Cao, Michelle

Cap, Daniel

Carlton, Felicity

Carr, Christine

Carton, Felicity

Chadha, Simran

Chalker, Kazuko

Chan, Matthew

Chan, Melissa

Cheryl, Cheryl

Chhetri, Sima

Chua, Cielomar

Chung, Grace

Close, Sarah

Coculescu, Ana

Cole, Michael

Cole-Pochon, Jane

Coller, Kathy

Conrie, Myriam

Cottrell, Michelle

Cowell, Siobhan

Cox, Rose

Coyle, Eliza

Crockett, Colleen

Davis, Amelia

Dessens, Jiyen

Diep, Janet

Dobson, Richelle

Dodds, Sandra

Dong, Elaine

Dooley, Melissa

Dowling, Bronwyn

Elsmore, Millie

Escosa, Marilyn

Fang, Michelle

Fang, Wendy

Feros, Isabella

Ferris, Samantha

Finney, Ella

Flood, Renee

George, Peter

Gilmore, Candice

Goedee, Kylie

Gomez, Leandro

Grady, Rosie

Gratiaen, Joel

Gray, Cecelia

Green, Miriam

Green, Ralph

Greenacre, Brian

Greeves, Celeste

Grujoska, Jasmina

Grunwald, Sharon

Guinness, Edwina

Han, Longy

Harbon, Yolanda

Harinder, Harinder

Harrington, Sophie

Heckmüller, Skadi	Maule, Yvonne	Riera, Anna
Heenan, Camille	Mayusiri, Sirima	Robertson, Liz
Henderson, Avali	McDonald, Alison	Robinson, Elizabeth
Henry, Dan	Mcdonald, Frederick	Schwartz, Daniel
Hock, Bronte	McGann, Nicky	Scott, David
Holcombe, Nikita	McKelvey-Bunting, Rosalind	Shaddock, Jacquis
Humphreys, Rhian	McKiernan, Pru	Simmons, Monique
Ingram, Carleigh	McLean, Hayden	Sinclair, Emily
Inoue, Sayako	McMasters, Stacey	Siros, Renée
James, Michelle	McPherson, Lynleigh	Smith, Susannah
James, Nathan	Mendham, Corinne	Smouha, Joey
Jamin, Nicolas	Meng, Elise	Solek, Dianna
Jefferies, Janelle	Meriakakis, Neta	Starke, Linda
Jiang, Annie	Mi, Jung	Stepanovska, Alana
Jones, Ursula	Micallef, Margaret	Stiles, Jodi
Kaspura, Bronwyn	Mikitas, Natasha	Stucchi, Naomi
Kastanias, Elizabeth	Miles, Candice	Stylianou, Lee
Keogh, Angela	Mils, Alison	Sumera, Karla
Khedoori, Nikki	Moeller-Nelson, Claudia	Teremzi, Otello
Khurana, Ooma	Monks, Nicole	Therese, Michelle
Kim, Hanna	Monte, Megan	Thompson, Zachery
Kim, Julia	Mora, Elizabeth	Tilly, Henry
Kim, Victoria	Mulford, Carrie	Toubia, John
Kingston, Grace	Murphy, Jessica	Townsend, Amanda
Kroesche, Sarah	Nematollahi, Soraya	Tracy, Richardson
Kumaran, Sharmila	Ng, Leona	Veal, Clare
Kurbaniak, Olivia	Nguy, Stephanie	Waladan, Sarah
Lancaster, Lynne	Nguyen, Gaston	Walton, Luke
Lanigan, Sophie	Nhan, Ann	Wang, Pei
Lawley, Claire	Nicholson, Gabrielle	Watt, Suzie
Lee, Amy	Nielsen, Angela	Westenberg, Thomas
Lee, Grace	Nunes-Silva, Rosemary	Whelan, Elsa
Lenard, Allison	O'Grady, Nell	White, Veronique
Li, Zhe	Oliveira, Marina	Wickham, Bec
Lin, May	Ormeno., Julieta	Williams, Laura
LiuChen, Angelbaby	O'Sullivan, David	Williams, Rebecca
Lorena, Lorena	O'Sullivan, Sarah	Wilson, Melanie
Louey, Philippa	Oxford, Lynn	Wright, Isaac
Luo, Christine	Palmer, Amanda	Wright, Lauren
Luxford, Sharon	Papadatou, Kallioph	Xiang, Janie
Magennis, Margaret	Papieruiack, Kate	Xiang, Samuel
Maguire, Shannon	Parker, Laurel	Yi, Naomi
Malliate, Simon-Pierre	Perera, Blanca	Zheng Keren
Marteau, Valerie	Plustwik, Peter	Zinovefi, Freya
Mason, Rebecca	Reed, Jordan	

COLLECTION CIRCLE AND ACKNOWLEDGED DONORS January – December 2016

Abel, Brian	Bennett, Tomoko	Buzby, Elizabeth
Ackerman, Rebekah	Benoliel, Katrina	Buzby, Paul
Adams, Dianne	Benoliel, Todd	Byatt, Karen
Adams, Donald	Best, Roderick	Cairncross, Lynne
Adkins, Kate	Bevan, John	Cairns, Hilary
Adkins, Peter	Bevins, John	Cairns, Hugh
Aitken, John	Beynon, John	Calf, Berenice-Eve
Alchin, John	Birch, Martha	Cameron, Neil
Allen, Jane	Birt, Jenny	Campbell, Brian
Allen, Karen	Bischoff, Renate	Campbell, Judith
Allen, Robert	Bishop, Christine	Campbell, Olivia
Allison, Catherine	Bisley, Terry	Capon, Edmund
Amm, Robin	Black, Linda	Capon, Joanna
Anderson, Gae	Black, Russell	Carey, Marie
Aplin, Carolyn	Blaxill, Morgie	Carey, Suzanne
Aplin, Graeme	Blomfield, Anne	Carney, Carole
Arnold, Jennifer Joan	Blomfield, Peter	Carney, Terry
Ashmore, Mara	Bondin, Paul	Caroll, Vivienne
Ashpole, Kris	Booth, Stephen	Carr, Jennifer
Atkinson, Moonyeen	Borecky, Natacha	Cary, Peter
Austin, Keith	Boyd, Camilla	Cassen, Freda
Bacon, Philip	Bracher, Roslynne	Chadwick, Heather
Baker, Anna-Rosa	Branch, Stephen	Chadwick, Richard
Baker, Dr Baker	Brann, Geoffrey	Champion, Caroline
Baker, Lyn	Breakspear, Jacqueline	Champion, G David
Baker, Steven	Breen, Francis	Chang, Judienna
Baldwin, Catherine	Breen, Sally	Chapman, Annabelle
Bantermalis, Lucy	Bremner, Michael	Chapman, Bill
Barboutsis, Fiona	Briggs, Janet	Chapman, Jennifer
Barker, Anna	Brooke, Vicki	Chapman, Lesley
Barker, Peter	Brookes, Diana	Charleston, Terry
Barnes, John	Brown, Jennifer	Charlton, Susan
Barnet, Michael	Bryant, Debbie	Charrington, John
Barnett, Tony	Bryant, Patrick	Cheong, Doreen
Barripp, Bettina	Buchanan, John	Chey, Jocelyn
Barry, Maxwell Rae	Buckingham, Antony	Chinneck, Margot
Barry, Ruth Tresilian	Bull, Colin	Chinneck, Stephanie
Batty, Gregory	Bull, Geraldine	Choulkes, Jill
Baur, Louise	Burns, Anne	Chua, Evelyn
Bear, Victor	Burns, Harding	Clark, Janelle
Beckley, Robyn	Burns, Mark	Clark, Robert
Beesley, Sandra	Burns, Mary	Clarke, Barbara
Begbie, S	Burns, Neil	Clarke, Des
Bell, Fiona	Burns, Sandra	Claxton, Russell

Clerehan, Esther	Dodd, Ian	Forbes, Sandra
Cohen, Anthony	Doherty, Gary	Ford, Glenora
Cohen, Mr Cohen	Doherty, John	Forster, Bruce
Cole, Stephanie	Doherty, Pam	Forster, Jan
Comerford, Kerry	Done, Pamela	Foster, Garry
Compton, A M B	Doree, Keith	Foster, Maxine
Compton, J S	Drew, Julie	Fox, Sally
Concannon, Alan	Duerden, Linda	Freudenstein, Jane
Condon, Miles	Duerden, Peter	Freyberg, Kylie
Conlan, Felicity	Duffy, Kim	Freyberg, Peter
Conroy, Jillian	Dundas, Barbara	Frost, Peter
Conroy, John	Dwyer, Jacqueline	Fuller, David
Corbett, Alastair	Earl, Helen	Fuller, Susan
Corbett, Elizabeth	Eccles, Kate	Furniss, Caroline
Corlette, Erin	Edwards, Bruce	Galbraith, Anne
Corlette, Michael	Edwards, Elizabeth	Galbraith, David
Cornwell, Phillip	Eichhorn, Peter	Gale, Eric
Cossman, Esther	Elliott, Maria	Gale, Tonia
Craswell, Peter	Elliott, Robert	Gardiner-Hill, Bunny
Crivelli, Michael	Elliott, Robert	Garland, Ian
Crivelli, Susann	Ellis, Rosalind	Garske, Jacqueline
Crook, Denise	Emerson, David	George, Janet
Crook, Roly	Emerson, Margaret L	Gibb, S J
Crookes, Lynne	Espie, Paul	Gibson, Liz
Cropley, Mrs Cropley	Espie, Roslyn	Gilkes, Elizabeth
Cudlipp, Pamela	Evatt, Elizabeth	Gillespie, Judith
Cunningham, Margaret	Ewens, Tracey	Gilmore, Simon
Davies, Colin	Fairfax, Helen	Gilmour, David
Davies, Gael OAM	Faithfull, Deidre	Glasson, Martin
Davies, Les	Faithfull, Donald	Goodwin, Clive
Davies, Rebecca	Farrar, Robert	Goodwin, Jenny
Davies, Roger	Farrell, Julia	Gough, Linda
Davis, Marc	Farrow, Adrian	Goyal, Manisha
Davison, Cristine	Farrow, Yvonne	Goyal, Raj
Davison, Don	Ferguson, Matthew	Grace, Carole
Dawson-Damer, Ashley	Fisher, Helen	Green, Anna
De Courcey, Gary	Fisher, Karen	Green, Christina
De Diana, Dario	FitzSimons, David	Green, Maurice
De Diana, Jacqueline	FitzSimons, Merrie	Green, Richard
De Graaf, Wendy	Flanagan, Richard	Greenacre, Brian
De Mole, Jenny	Flannery, Angela	Gregory, John
De Salis, Anne	Flynn, Christopher	Gresham, Kenneth
Deakin, Kate	Flynn, Paula	Gresham, Sara
Deer, Christine	Fong, Colin	Griffin, Pauline
Devine, Matt	Fong, Karen	Grossbard, Jacob
Dewar, Jennifer	Forbes, June	Guest, Priscilla

Guest, Sophia
Gunn, Colin
Guy, Catherine
Hack, Peter
Hafey, Steve
Hagiwara, Aiko
Hale, Alison
Hall, Barbara
Hall, Fusae
Halliday, Alison
Hamberger, Jonathan
Hamberger, Michelle
Hamilton Smith, Joseph
Hardaker, Barbara
Harding, Kim
Hargraves, Maggie
Hargraves, Roush
Harper, Chris
Harris, Annette
Harris, Michele
Hartman, Keith
Haskell , Janetta
Hawker, Jill
Hawker, Michael
Healey, James
Helprin, Garry
Henderson, Lindy
Henderson, Robert
Hercus, Janita
Hercus, Philip
Hernon, Fran
Herring, Joan
Hershon, Jennifer Ann
Hewitt, Anthony
Hewitt, Virginia
Heyko-Porebski, Louise
Higgin, Libby
Hill, Ian
Hilton, John
Hilton, Lynette
Hislop, John
Hoare, Michael
Hodge Family
Hodgkinson, Christina
Hodgkinson, Geoffrey
Hodgson, Helen

Hodgson, Stewart
Hogan, Richard
Hollings, Bev
Hollings, Ray
Hollis, Sally
Honold, Edith
Hood, Genelle
Horton, Margaret
Horton, Tony
Hoult, Clyth
Hoult, Paul
Howard, Patricia
Howes, Patricia
Howes, Stephen
Hudson, Michael
Hunter, Christine
Hunter, Pauline
Hunter, Robert
Hunyor, Alex
Hunyor, Roslyn
Hussey, Simon
Ianitto, Sandra
Ikenberg, Jean-Pierre
Ikenberg, Maria
Illingworth, David
Illingworth, Nereda
Inder, Bryan
Ippolito, Paul
Irvine, Barbara
Irvine, Jack
Isles, Angela
Jabbour, George
Jago, Jacqueline
James, Simon
Jarvis, Colin
Jarvis, Jan
Jenkins, David
Jenkins, Heather
Jensen, Jan
Jeremy, David
Jeremy, Philippa
Jeremy, Ruth
Joel, Alexandra
Joel, Anna
Joel, Michael
Johns, Leslie

Johns, Susan
Johnson, Howard
Johnson, Ruth
Johnson, Stuart
Jones, Barbara
Jones, Brian
Jones, Gillian
Julliard, Marcel
Karpin, Angela
Kearns, Michele
Keenan, Philip
Keith, Wendy
Kell, Anne
Kell, Richard
Kelly, Cecily
Kelman, Hilary
Kennett, Gillian
Kenny, Pamela
Kerstev , Maria
Kerstev , Vesna
Kesson, Alison
Keyte, Jill
Khoury, Susan
Kibble, Christine
Kim, Eddy
Kimpton, Geoffrey
Kimpton, Margaret
Kinchington, Barrie
Kinchington, Judith
King, Jennifer
King, Lionel
King, Robert
King, Rosemary
Kingston, Lyn
Kirkwood, Sue
Kloster, Jill
Knowles, Graham
Knowles, Vivien
Koelzow, Heike
Kreuchen, Heidi
Krishna Reddy, Shashi
Krishna Reddy, Venkata
Kulmar, Stephen
Ladd, Brian
Laidlaw, Hilary
Lance, James

Lance, Judith
 Lane, Micheline
 Lange, Barbara
 Latos-Valier, Paula
 Law, Elaine
 Le Grand, Michael
 Leahy, Judith
 Leahy, Terrence
 Leaver, Dell
 Lee, John
 Lee, Steven
 Lennon, Brett
 Letcher, Dean
 Levitan, David
 Lilienthal, Craig
 Lilienthal, Shirley
 Littlemore, Ian
 Littlemore, Linda
 Littman, Jennifer
 Livesey, Jonathan
 Llewellyn-Jones, Suzanne
 Lloyd, Christine
 Lobel, Keren
 Louden, Ken
 Louden, Susan
 Lowbridge, Pamela
 Luck, Therese
 Lysenko, John
 Macdonald, Graham
 Macdonald, Pamela
 Mackay, Joy
 Mackellar, Richard
 MacKenzie, Elizabeth
 Mackisack, Margaret
 Magill, David
 Magill, Noelle
 Malin, David
 Malin, Phillipa
 Mallon, Louise
 Malota, Magdalena
 Marresh, Zora
 Marryatt, Hal
 Marsh, Nigel
 Marsh, Roslyn
 Marsh, Sandra
 Mason, Philip

Massie Greene, Pamela
 Matkovich, Jane
 Matkovich, Nicholas
 Max, Lindie
 Max, Robert
 McBride, Pamela Joan
 McCabe, Kevin
 McCabe, Susan
 McDermott, Lorraine
 McDiven, Chris
 McDiven, Ross
 McDougall, Robert
 McGill, Elizabeth
 McGrath, Ian
 McIlveen, Craig
 McIlveen, Katrina
 McIntyre, Anne
 McLachlan, Elspeth
 McLennan, Hamish
 McLennan, Lucinda
 McMahan, Daniel
 McNamara, Stephen
 Meek, Jan
 Michell, Fran
 Michell, Richard
 Miller, Helen
 Miller, Irene
 Miller, Patricia
 Miller, Peter
 Millin, Greg
 Mills, Carol
 Mills, Kate
 Minogue, Caroline
 Minogue, Nick
 Minto, Averill
 Minto, James
 Mitchell, Jill
 Mizukoshi, Yushiro
 Mokesch, Sena
 Monckton, Glenn
 Monckton, Maureen
 Morel, Margaret
 Morgan, Gwen
 Morrissey, Neal
 Moseley, Les
 Moseley, Lois

Mounier, Yann
 Moylan, Joanne
 Muecke, Frances
 Munro, Margaret
 Munro, Paul
 Murphy, Karen
 Murray, Barry
 Murray, Kaoru
 Murray, Sonya
 Muth, Melinda
 Myers, Hal
 Nairn, Gillian
 Nebenzahl, Irena
 Neustein, Janet
 Newcastle Art Gallery Society
 Newland, Jennifer
 Newman, Janet
 Newman, Paul
 Ng, Sue
 Nguyen, Vi
 Nicol, Helen
 Nicolson, Linda
 Nisbet, Jennifer
 Niven, Janet
 Norsa, Paula
 North, Graham
 Novikoff, Patricia
 Nugent, Susan
 O'Connor, Rosalind
 Onslow, Karl
 O'Reilly, Jan
 Osborn, Joan
 Osborn, Robert
 Owens, Anne
 Owyong, Mary
 Pamenter, Claire
 Pang, Chris
 Pantazis, Neville
 Pardoe, Andrew
 Parker, Merrilee
 Parkinson-Fernandez, Janette
 Parsons, Virginia
 Pascoe, Marion
 Paul, Hugo
 Paul, Michael
 Payne, Chris

Paynter, Meredith	Roche, Trea	Smith, Jocelyn
Pelham, Natalie	Rose, Alan	Smith, Leonard
Perry, Mr Perry	Rose, Helen	Smith, Shona
Peters, Barbara	Roughley, Brian	Smith, Susan
Pethebridge, Andrew	Rowell, Doug	Smith, Trisha
Picos, Connie	Rowell, Helen	Smyth, Philip
Pierce, Larry	Royle, Carolyn	Smyth-Davey, Jennifer
Pike, Bruce	Royle, Tony	Solomon, Charles
Pike, Wendy	Rozen, Alan	Solomon, Esther
Playfair, Jacqueline	Rozen, June	Sowell, Marilyn
Playfair, Justin	Rufle, Frank	Sowell, Merv
Poddar, Dave	Russell, Elizabeth	Spiegel-Keighley, Karin
Pollitt, Christine	Russo, Robert	Sproats, Shirley
Pollitt, James	Russo, Sandra	St Clair, Donna
Powell, Frances	Ryan, Irene	St George, Lourdes
Pritchard, Greeba	Ryan, Sharon	Stegemann, Nicole
Quigley, Narelle	Ryan, Stephen	Steller, Barbara
Radosavljevic, Julie	Rygate, Gemma	Stevens, Susan
Ramsey, Ron	Saliba, Lucia	Stewart, Christine
Ranallo, Michael	Salisbury, Janis	Stewart-Hunter, David
Ranger, Anne	Samaha, John	Stilwell, Phil
Ranger, Ross	Sampson, Mark	Stone, Robyn
Rapaich, Zorica	Sampson, Ruth	Storch, Caroline
Rapee, Judith	Sankey, Margaret	Sultmann, Linda
Rawson, Diana	Sansom, Philip	Symington, Joan
Rawson, John	Sarvay, Beverley	Symington, Neville
Reed, Christopher	Saunder, Lynne	Symonds, Allene
Reed, Jennifer	Scarf, Garry	Symonds, Bruce
Reed, Madeleine	Schadel, Caren	Symonds, Elizabeth
Reid, Julie	Scott, Ian	Taylor, Paul
Reid, Tony	Scott, Jennifer	Taylor, Peter
Reilly, Jacqueline	Scott, Noreen	Taylor, Susan
Rein, Paul	Scragg, Greg	Tepper, Janet
Rhyder, Gary	Segaert, Michelle	Tey, Cilla
Rice, Trevor	Sharp, Marty	Tey, Terry
Richardson, Mr	Sheldon, John	Thampan, Binu
Richardson, Mrs Richardson	Sheppard, Elizabeth	Thomas, Annalise
Richardson, Penelope	Sheridan, Margaret	Thomas, David
Richmond, Kate	Simkin, Denise	Thornhill, Frieda
Richter-Spencer, Jan	Singer, Ana	Thornhill, Peter
Riggs, Freida	Skinner, Antony	Thorpe, Melissa
Roadley, V L	Skinner, Jann	Todd, Pruellen
Robertson, Murray	Smith, Alan	Trahair, Tim
Robertson, Wendy	Smith, David	Trahair, Vencie
Robinson, D	Smith, Elisabeth	Triggs, David
Roche, Mick	Smith, Jo-Ann	Tse, Pandora

Tunkunas, Terry	Waugh, Ellen Margaret	Wilkinson, Caroline
Turner, Ivana	Webb, Phillip	Williams, Paul
Valier, Biron	Weiley, Roslyn	Williams, Rebecca
Vargassoff, Vera	Weir, Marie	Williams, Vicki
Vellacott, Edward	West, Elizabeth	Wilson, Andrew
Vellacott, Morna	Westman, Adrienne	Wilson, Anthony
Vindin, Alan	Weston, Sheldri	Wilson, Christopher
Volunteer Task Force	Westworth, Chris	Winsor, Barrie
Voyazis, Maryanne	White, David	Winsor, Lorraine
Wakefield Evans, Nicola	White, James	Witt, Peter
Waldron, Jane	White, Katie	Woodham, Anne
Wales, Gai	White, Linda	Wrigley, John
Wales, Tony	White, Nigel	Wrigley, Julie
Walker, Ian	White, Romany	Wrobel, Andrea
Walsh, Richard	White, Spencer	Wrobel, Elinor
Walsh, Sue	Whiteford, Warner	Wynter, Jane
Ward, Carolyn	Wikramanayake, Margaret	Yong, Joyce
Warre, Priscilla	Wikramanayake, Pren	Young, Julie-Anne
Watkins, Rachel	Wildschut, Rudy	Young, Megan
Watson, Michael	Wilhelm, Kay	Yuen, Robert
Watson, Michele	Wilkey, Hannah	Yuen, Rosemary
Watson, Nicole	Wilkey, Ian	Zampatti, Sergio

CORPORATE SPONSORSHIP

The Society is extremely fortunate to have the generous support of the following organisations that provide financial sponsorship to many areas of the Society's operations.

10 group *Design services from 1999*
Arab Bank Australia *Learning curve lecture series from 2010*
Artology *Resonate concert series from 2013*
Brian Abel *Members' workshops from 2015*
Clifford Chance *Members' parties from 2015*
Faber-Castell Australia Pty Ltd *Kids Club from 2010*
K.W.Doggett Fine Paper *Paper supplies from 2010*
Lindsay Yates Group *Print services from 2002*
Philip Bacon Galleries *Volunteer support from 2014*
RESIMAC Limited *Art Appreciation lecture series from 2007*
Taylors Wines *Wine for members' events from 2002*
Taylors Wines Family

CORPORATE COLLECTION CIRCLE DONORS January - December 2016

Eric & Tonia Gale

ADDITIONAL SUPPORT

Patrick Corrigan and Aurecon *for Jazz at the Gallery*
Emirates Australia *for the Travel Draw 1st prize*
Hutchings Pianos *for piano hire for concerts*
Lindt & Sprüngli Australia *for chocolates and prizes for events*

CORPORATE MEMBERS January – December 2016

Allen Jack + Cottier	Fairfax Media Limited
Allens	FiftyFive5 Pty Ltd
Alstom Limited	FM Global
American Express Public Affairs	Fortress Private Wealth
AMP Capital	Fox Symes & Associates
Architectus	Geyer Pty Ltd
Arinex Pty Ltd	Gilmore Interior Design
Arredorama	Goldrick Farrell Mullan Solicitors
Arterial Marketing	Guardian Vaults
ARUP Pty Ltd	Hall & Wilcox
Ashurst	Herron Todd White
ASX Limited	Hicksons
Atomic 212 Group	Holman Webb Lawyers
Aurecon	Hostplus
Australian Unity	HUB24
AWE Limited	HWL Ebsworth Lawyers
AxiTrader	IBM Australia
BAI Communications	icourts
Bain & Company	IMB Ltd
Baker McKenzie	IncNet
BDO	iSentia
Blue Star Print	Jackson Teece Architecture
Bridges & Associates	Jirsch Sutherland
Carroll & O'Dea Lawyers	John Claudianos
Cartier Group Pty Ltd	Johnson Pilton Walker Pty Ltd
CBRE	JPR Architects Pty Ltd
Challenger	Just Sydney Pty Ltd
ClearView Wealth Limited	Knoxweb Investments Pty Ltd
Clifford Chance	KPMG SGA
Cliftons	Lansa Pty Ltd
Clouston Associates	Lavender
Coffey Environments Australia Pty Ltd	Levi Consulting Pty Ltd
Colliers International	Liberty International Underwriters
Copyright Agency Viscopy	Loop Brands Pty Ltd
Credit Suisse	macpeople
Crone Partners Pty Ltd	Macquarie Telecom
Cundall	Martin & Savage Pty Ltd
Curwoods Lawyers	MaxMara Australia
David Stevens	McCabes Lawyers Pty Ltd
Dentons Australia Pty Ltd	McGrathNicol
DFS Galleria Australia	McKinsey & Company
DibbsBarker	Media Super
Directioneering Pty Ltd	Menai Sand & Soil
dwp suters	Moray & Agnew Lawyers
Egencia	Morgan Stanley Wealth Management Australia Pty Ltd
Egon Zehnder	Mosman Art Gallery & Cultural Centre
Emirates SkyCargo	Multi-Pak Industries Pty Ltd
Energy Industries Superannuation Scheme Pty Ltd	Mundipharma Pty Ltd
Eric & Tonia Gale	

Munich Re	Snap Printing North Sydney
Nanda\Hobbs Contemporary	Solgen Energy Group
National Australia Bank	SomnoMed Ltd
NBRSARCHITECTURE	Sparke Helmore Lawyers
Nettleton Tribe	Steensen Varming
News Corp Australia	Stephenson Mansell Group
Nicholas Eddy & Company	Stuart Jacquet
Norman Disney & Young	Surface Design
North Shore Private Hospital	Taylor Thomson Whitting
Norton Rose Fulbright Australia	Teece Hodgson & Ward
Oakton Services	Telstra Alumni
ORC International	The Northside Group
Ord Minnett Limited	Thomson Geer
Peter Hewett Optometrist	Veolia Environmental Services (Australia) Pty Ltd
Pimas Gale Construction P/L	Vestech Pty Limited
Precision Group	Villa & Villa Pty Ltd
Private Portfolio Managers Pty Ltd	Viral Diagnostic & Referral Laboratory
Professional Opinions	Vivid Tours International
QBE Insurance Group Ltd	VoIP Pty Ltd
QBE Lenders' Mortgage Insurance	Warren Smith & Partners Pty Ltd
Rabobank	Wehbys
Renaissance Tours	Wentworth Galleries
ResMed Ltd	Wesfarmers Limited
Robeco	Wood & Grieve Engineers
RSM Australia Pty Ltd	Woodbury Financial Services Pty Ltd
Savills Project Management	Woods Bagot
Scan Pacific International	Woven Image
Shapiro Auctioneers	WSP Parsons Brinckerhoff
Sky News Business Channel	WT Partnership
Smart Design Studio	Wunderman-Bienalto
SMS Management & Technology	XL Catlin Australia

ART GALLERY SOCIETY STAFF 2016

EXECUTIVE

EXECUTIVE DIRECTOR Ron Ramsey (from February 2016)

EXECUTIVE ASSISTANT Batsheva Abrahams

FINANCE

FINANCIAL CONTROLLER John Kamleitner

SENIOR FINANCE MANAGER Roanne Papas

ASSISTANT ACCOUNTANT Clare Vu

LOOK MAGAZINE

LOOK EDITOR John Saxby

DEPUTY EDITOR Sarah Couper

MARKETING

MARKETING MANAGER Natalie Matar

CORPORATE MEMBERSHIP

CORPORATE DEVELOPMENT DIRECTOR Mark Manton

CORPORATE PARTNERSHIPS COORDINATOR Katie Tholo

GENERAL MEMBERSHIP

MEMBERSHIP MANAGER Richard Baesjou

MEMBERSHIP COMMUNICATION COORDINATOR Iona Rennie

MEMBERSHIP ASSISTANT Cathy Shen

MEMBERS LOUNGE

MEMBERS LOUNGE MANAGER Fiona McIntosh

RECEPTION ASSISTANTS Rita Ibrahim, Neta Mariakis, Brooke Schofield, Lisa Tarbuck

YOUNG MEMBERS

YOUNG MEMBERS MANAGER Neta Mariakis (until June 2016)

EVENTS

EVENTS MANAGER Michelle Therese

TICKETING MANAGER Jamie Mackenzie

EVENTS COORDINATOR Sarah Maxwell

EDUCATIONAL PROGRAMS COORDINATOR Dot Kolentsis

EVENTS ASSISTANT Phoenix Chisholm, Kristy Stewart

ADDITIONAL SUPPORT

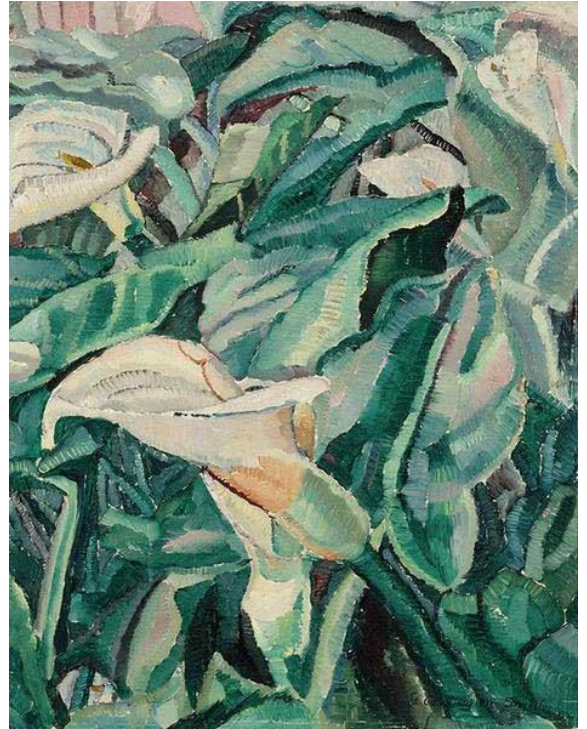
SOFTWARE ENGINEER Edson Carvalho

WORLD ART TOURS DIRECTOR Liz Gibson

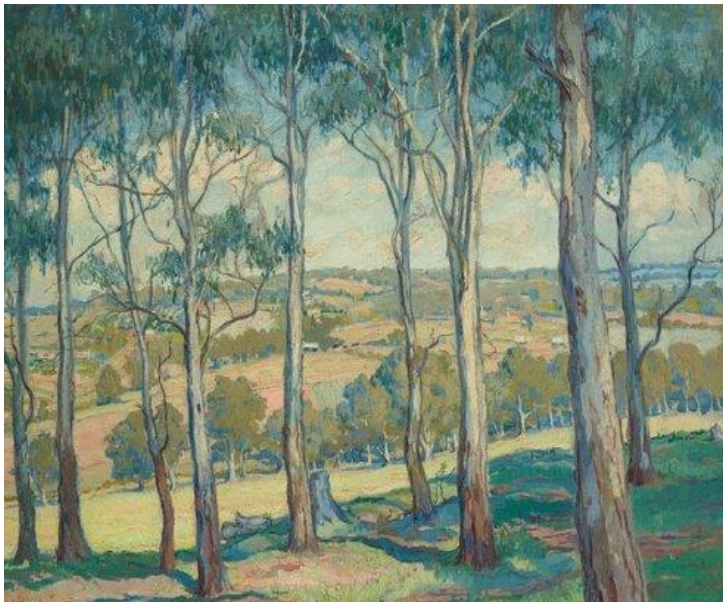
ACQUISITIONS



John Russell
In the afternoon 1891



Grace Cossington Smith
Arums growing 1927



Hilda Rix Nicholas
Through the gum trees, Toongabbie 1920



Martin Lewis
Glow of the city 1929

Art Gallery Society of New South Wales

ABN 26 000 207 198

Art Gallery Road, The Domain,

Sydney NSW 2000 Australia

Telephone (61 2) 9225 1878

Email info@artgallerysociety.org.