



CHILDREN'S  
TRAIL

THE JOHN SCHAEFFER GALLERIES

ART  
GALLERY  
NSW

# GRAND COURTS

HAVE FUN EXPLORING THE GRAND COURTS  
AND MAKE SOME ART OF YOUR OWN

**Collect**  
a pencil



**Go** on a journey  
through the  
Grand Courts on  
ground level



**Discover**  
the range of  
historical  
artworks

★ **Look, draw and have fun!**



The **Grand Courts** were built in the late 1890s. These rooms now house collections of European, Australian and Aboriginal art. After more than a century, the Grand Courts are a familiar and much-loved icon of the Gallery.

Written by Danielle Gullotta and Amanda Peakcock; designed by Karen Hancock

© Public Programs Department, Art Gallery of New South Wales 2009

All works are the collection of the Art Gallery of New South Wales unless otherwise stated.

cover, above: Grand courts interiors. Photos: AGNSW photography studio

★ **Stroll** through the Piazza San Marco, Venice.

**Imagine** how you would feel surrounded by these historic buildings.

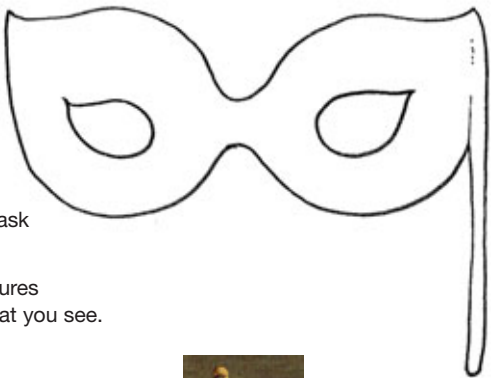
**What** sounds would you hear if you were in the Piazza?

**Find** the figures wearing masks. Who would you be in this scene?

**Describe** what you are wearing.

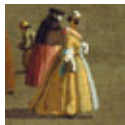


left, details below: Canaletto *The Piazza San Marco, Venice* 1742–46, oil on canvas. Gift of James Fairfax 1996



**Decorate** this mask with patterns.

**Locate** these figures and describe what you see.



**At home find** out about the Carnevale and the use of masks in Venice. What time of the year is it held? **Design** and make your own mask you could wear to the Carnevale in Venice.



★ **Imagine** what Iphigenia is dreaming of.

Where is this scene set?

**Notice** the warm colours used by the artist.

What time of the day is it?

The ill-mannered Cymon is transformed seeing the beauty of Iphigenia.

**Write** a poem about beauty.

B \_\_\_\_\_

E \_\_\_\_\_

A \_\_\_\_\_

U \_\_\_\_\_

T \_\_\_\_\_

Y \_\_\_\_\_

**Find** an artwork in this gallery which you find beautiful to look at.

**Draw** it in this frame.

**Look for** Leighton's smaller version of this theme.



Frederic, Lord Leighton Cymon and Iphigenia  
1884, oil on canvas. Purchased 1976



**At home find** out more about the characters of Cymon and Iphigenia.

**Rewrite** the story in a modern setting. **Illustrate** your story.



★ **Welcome** to the French countryside.

Pissarro has used small dabs of paint. **Examine** the painting close-up and further away. How does it change?

What are the colours Pissarro has used to paint the leaves and plants?



Camille Pissarro *Peasants' houses, Éragry* 1887  
oil on canvas. Purchased 1935

**Imagine** yourself in this scene and invent a story.

**Draw** yourself in the French countryside.



**At home make** a collage of a country scene using small pieces of colourful, torn tissue paper. Think about the range of colours you will use.



★ **Charge** in to this battle scene.

**Locate** the Emperor Napoleon on the white horse in the background. Why is he so far away from the action?

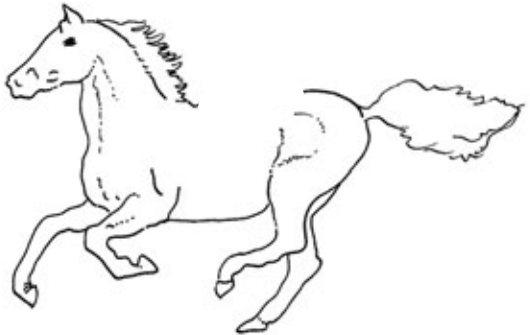
**Focus** on the expressions of the soldiers and horses. What types of sounds do you think the soldiers are making? Why?

**Imagine** being part of the charge. What would you and your horse be wearing?

**Draw** yourself on the horse below.



Édouard Detaille *Vive L'Empereur* 1891  
oil on canvas. Purchased 1893



**At home find** out why Napoleon Bonaparte was one of the greatest military leaders in history. Discuss why he was the subject of so many artworks. Find examples.



## ★ Beware of bushrangers!

How have the bushrangers stopped the stage coach?

See if you can count all eight horses.

**Examine** the landscape the painting is set in.

**List** the colours which suggest the dryness of the bush.



Tom Roberts *Bailed up* 1895–1927  
oil on canvas. Purchased 1933

**Draw** the valuables the bushrangers are looking for inside this bag.



**At home collect** native leaves, grasses and bark to create a colour scheme to represent the Australian bush. Compare the range of colours you have collected to the colours in *Bailed up*.



## ★ Step into the boat.

Where do you think the family is going in these fancy clothes?

**Compare** their clothes to what you are wearing.

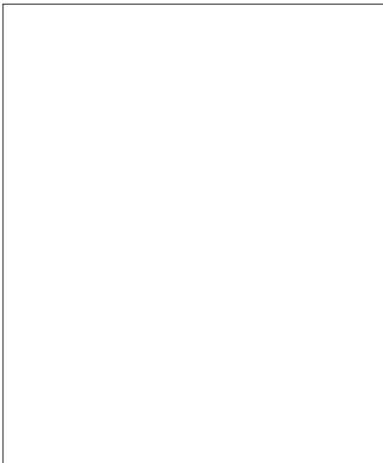
**Observe** the shadows. What time of the day do you think it is? **List** the colours used to suggest light and shadow.



E Phillips Fox *The ferry* c1910–11  
oil on canvas. Purchased 1949

Do you think this painting was painted outdoors or in a studio? Why?

**Draw** your family on a Sunday outing.



**At home find** photographs of a family outing. **Use** the photographs to create a painting which captures the moment in time. **Use** small brush strokes of colour to show light, shadow and detail.





★ **Walk** around this bronze sculpture.

Bertram Mackennal *The dancer* 1904  
bronze. Purchased 1910



**Observe** the way light falls upon the figure and affects the colour of the bronze surface.

**Notice** the way *The dancer* holds her hands. **Try** imitating this stance and positioning your hands in the same way. How would you move next?

**Look** closely at the expression on her face. **Write** what *The dancer* is thinking in the thought bubble.

**At home observe** a person dancing and draw several quick sketches. **Select** a sketch to make as a sculpture. **Use** wire to create the structure, secure it to a wooden base and model the figure using air drying clay or modeling clay.



★ **Look** at these sculptures called *tutini*.

Laurie Nelson  
Mungatopi,  
Bob One Apuatimi,  
Jack Yarunga,  
Don Burakmadjua  
and Charlie  
Kwangdini were  
senior artists from  
the Tiwi Islands.

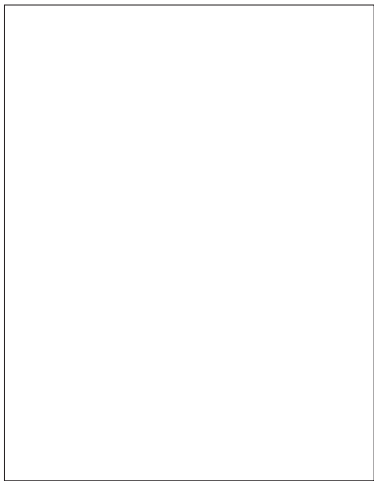


**Walk** around these tutini  
and view them from all  
sides. **Look** closely at  
the patterns and designs  
painted onto the surface.

**Find** these shapes  
and tick them as you  
find them:

- ☐ diamond
- ☐ square
- ☐ rectangle
- ☐ circle

**Design** your own  
geometric patterning.



**At home try** painting on a curved surface. **Use** a cardboard tube  
to create your own special object. **Think** about what patterns and  
images you might use to represent yourself. Give your artwork a title.

Laurie Nelson Mungatopi, Bob One Apuatimi, Jack Yarunga, Don Burakmadjua, Charlie Kwangdini and unknown artist  
*Tutini* (Pukamani gravapost) 1958, natural pigments on wood. Gift of Dr Stuart Scougall 1959 © Courtesy of Jilamara Arts and Craft



★ **Imagine** the action of a dugong hunt.

Jabarrgwa  
Wurrabadalumba is  
an Anindilakawa artist  
from Groote Eylandt.



**Look** closely at this bark painting. What time of day do you think this is? Find the harpoon rope swinging through the air, the coil of rope and the two people paddling to keep the canoe on course.

**Find** other images of dugongs in the paintings around this one. How are they similar or different?

**Draw** a picture of this boat from a different point of view. How would it look from above or front on?



**At home paint** a scene of action such as scoring a goal in a game of football, a day at Luna Park or acrobats at the circus.  
**Think** about how you will show movement and action.



★ **Look** at this painting of a billabong called Corimula.

Mithinari Gurruwiwi is a Yolgnu painter from east Arnhem Land.

**Find** the baby file snakes and goannas playing together near a submerged rock.

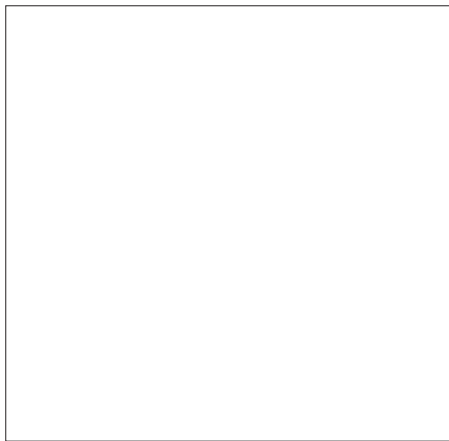
**Locate** the star shaped waterlilies.

Can you see any patterns that look like bubbles in the water?

**Draw** an underwater scene in the box below.

**Show** patterns of water flowing and moving.

**Include** plants, rocks and creatures that you might see underwater.



Mithinari Gurruwiwi *Djalkung (File snakes)* c1960, natural pigments on bark.  
Gift of Professor Harry Messel 1987 © Estate of Mithinari Gurruwiwi and Buku Larrnggay Mulka Art Centre and Museum

**At home find** out about an Aboriginal language spoken in your region. **Learn** how to exchange greetings in this language and find as many local words as possible for plants, animals and places.

