



ARCHIBALD.PRIZE

ART
GALLERY
NSW

thearchibaldprize.com.au

Art Gallery of New South Wales
27 March – 30 May 2010

Slide Show

(The Archibald Prize is)
of the people, by the
people, for the people.

EDMUND CAPON, DIRECTOR
ART GALLERY OF NEW SOUTH WALES, 2004

(The Archibald Prize is)
of the people, by the
people, for the people.

It's the one event where public opinion does not feel it has to subscribe to curatorial knowledge. People are always curious about other people's circumstance, their situation. **There's a kind of discreet pervy going on here.** It's a very public event and I think the general public feels a strange sense of ownership of the Archibald. This is the one time they can feel almost participants.

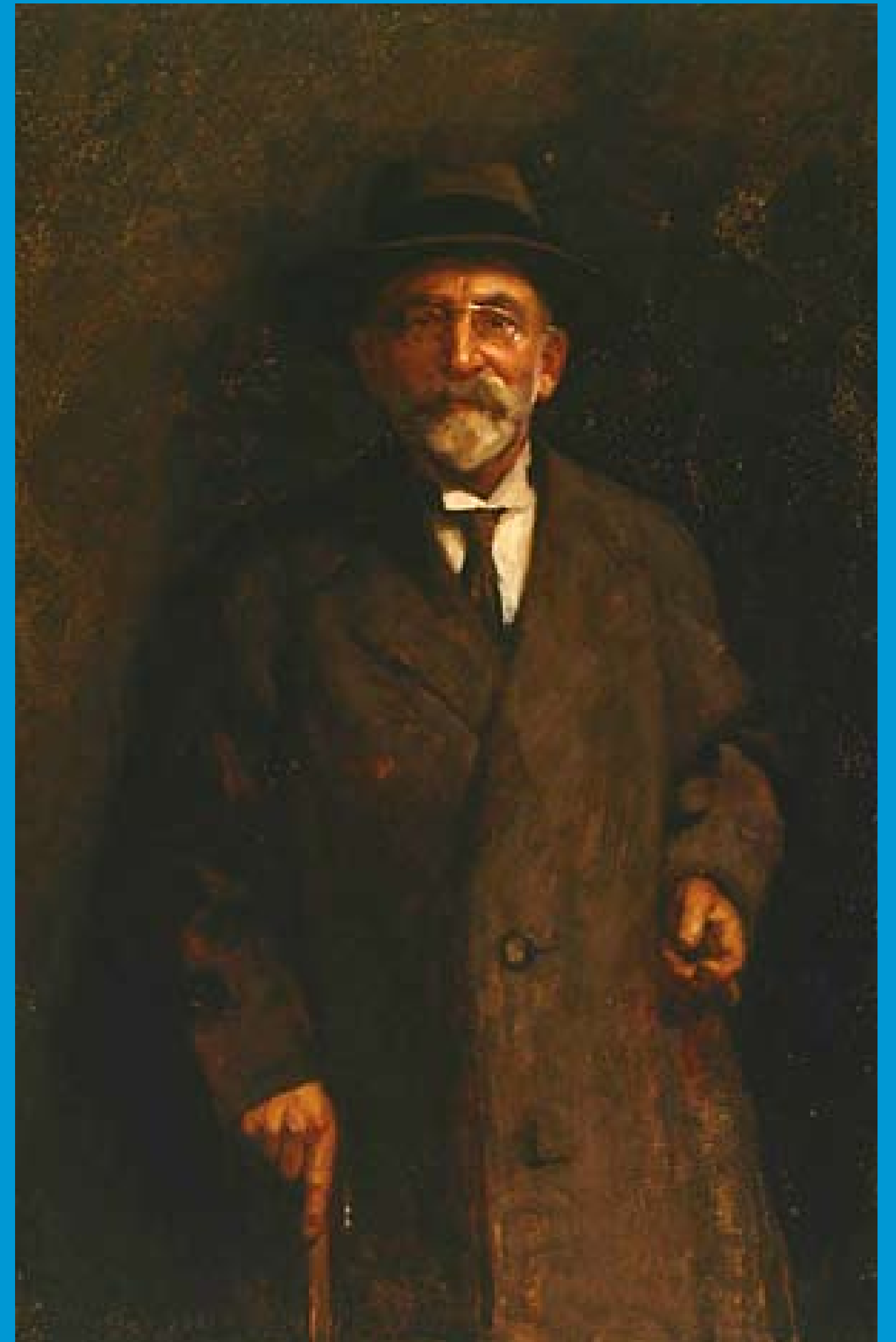
EDMUND CAPON, DIRECTOR
ART GALLERY OF NEW SOUTH WALES, 2005

History

The Archibald Prize is one of Australia's oldest and most prestigious art awards.

JF Archibald's (1856–1919) primary aims were to foster portraiture, support artists and perpetuate the memory of great Australians. Since its inception in 1921 the prize has been awarded to some of Australia's most important artists, including George Lambert, William Dobell and Brett Whiteley.

Each year in accordance with the bequest of Jules F. Archibald the Trustees of the Art Gallery of New South Wales invite artists to submit paintings in competition for the annual Archibald Prize, to be awarded to the best portrait preferentially of a man or woman distinguished in Art, Letters, Science or Politics. The artist must have been a resident of Australia during the previous 12 months. The entries are judged by the Trustees of the Gallery and the winner currently receives a prize of \$50 000, sponsored by ANZ.



Jules Francois Archibald 1921
Art Gallery of New South Wales

Controversy

The Archibald Prize, from its outset, has aroused controversy while chronicling the changing face of Australian society. Numerous legal battles and much debate have focused on the evolving definitions of portraiture. It has become one of the most popular annual art exhibitions in Australia.

Art students demonstrating
against the judges decision
in the 1952 Archibald Prize
Sydney Morning Herald, 25 January 1953

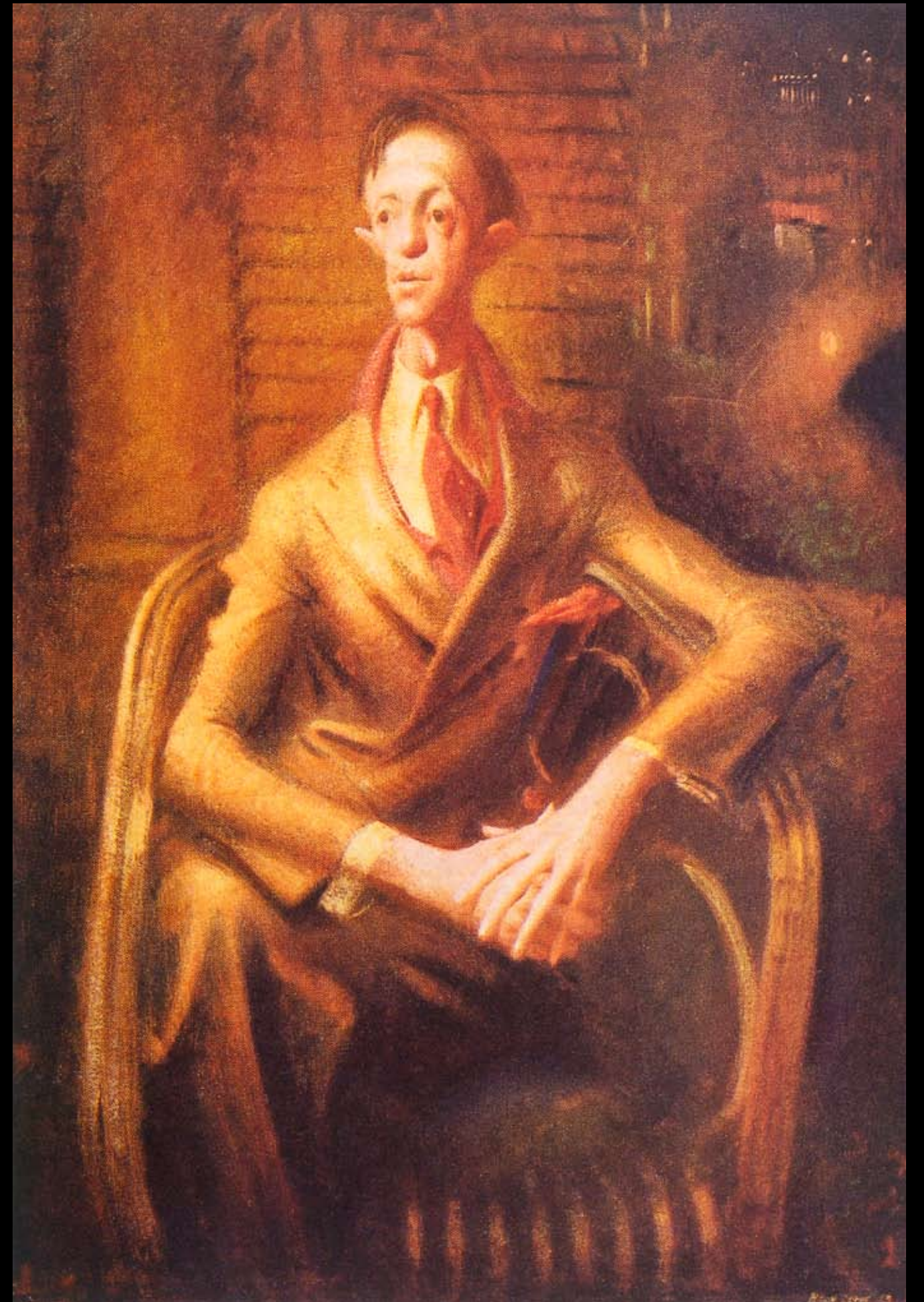


Challenge by the finalists

I can take six different artists,
those that you would call
representational, and they
would give you a **different**
face I think

WILLIAM DOBELL

William Dobell
Portrait of an artist (Joshua Smith) c1943
Private collection



Challenge to tradition

It is almost **impossible**
to make a good portrait.

BRETT WHITELEY

Brett Whiteley
Art, Life and the other thing 1978
oil on canvas
[Art Gallery of New South Wales](#)

Brett Whiteley
Self-portrait in the studio 1976
oil on canvas
[Art Gallery of New South Wales](#)

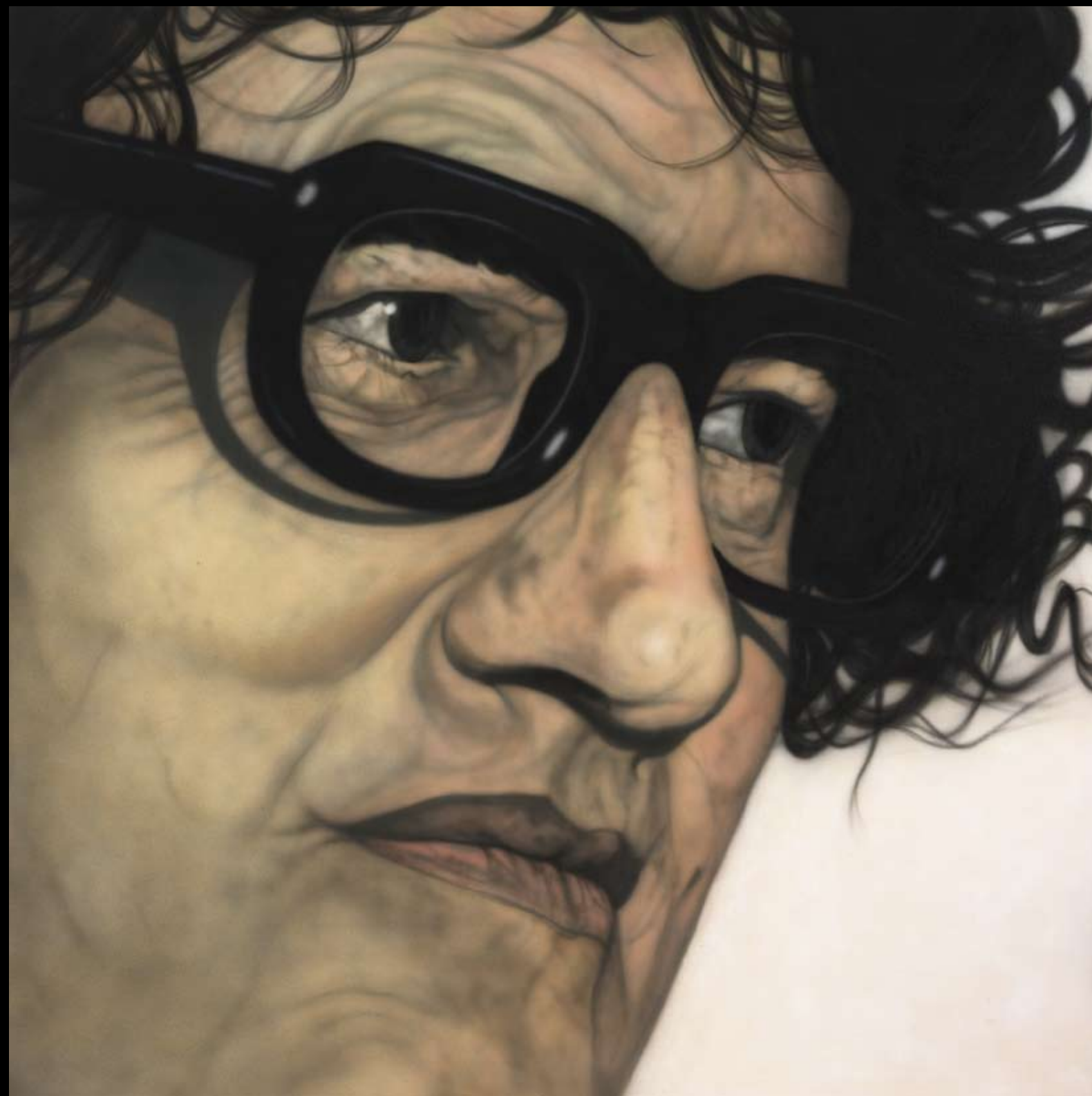


Challenge to the rules

If the judges were not able to tell whether an artist's work was **painted** from life or not, they were not judging it as a work of art.

JOHN BLOOMFIELD

John Bloomfield
Tim Burstall 1975
Synthetic polymer paint on canvas
Art Gallery of New South Wales



Archibald Prize Winner 2010

I wanted a full-length portrait because he does use his whole body when he **performs**. It's him in his house so there are a few personal pointers....

SAM LEACH

Sam Leach
Tim Minchin
oil and resin on wood



Packing Room Prize 2010

Like his celebrity status, which may create a false distance between the subject and their audience, the **sheer scale** of the work forces you to view it from a distance...

NAFISA

Nafisa
Glenn in black and white
mixed media on board



Mood and drama

Andrew had told me about his childhood rowing boats on Pittwater and, in the end, I **knew** this was how I should paint him.

ALEXANDER MCKENZIE

Alexander McKenzie
Andrew Upton
oil on linen

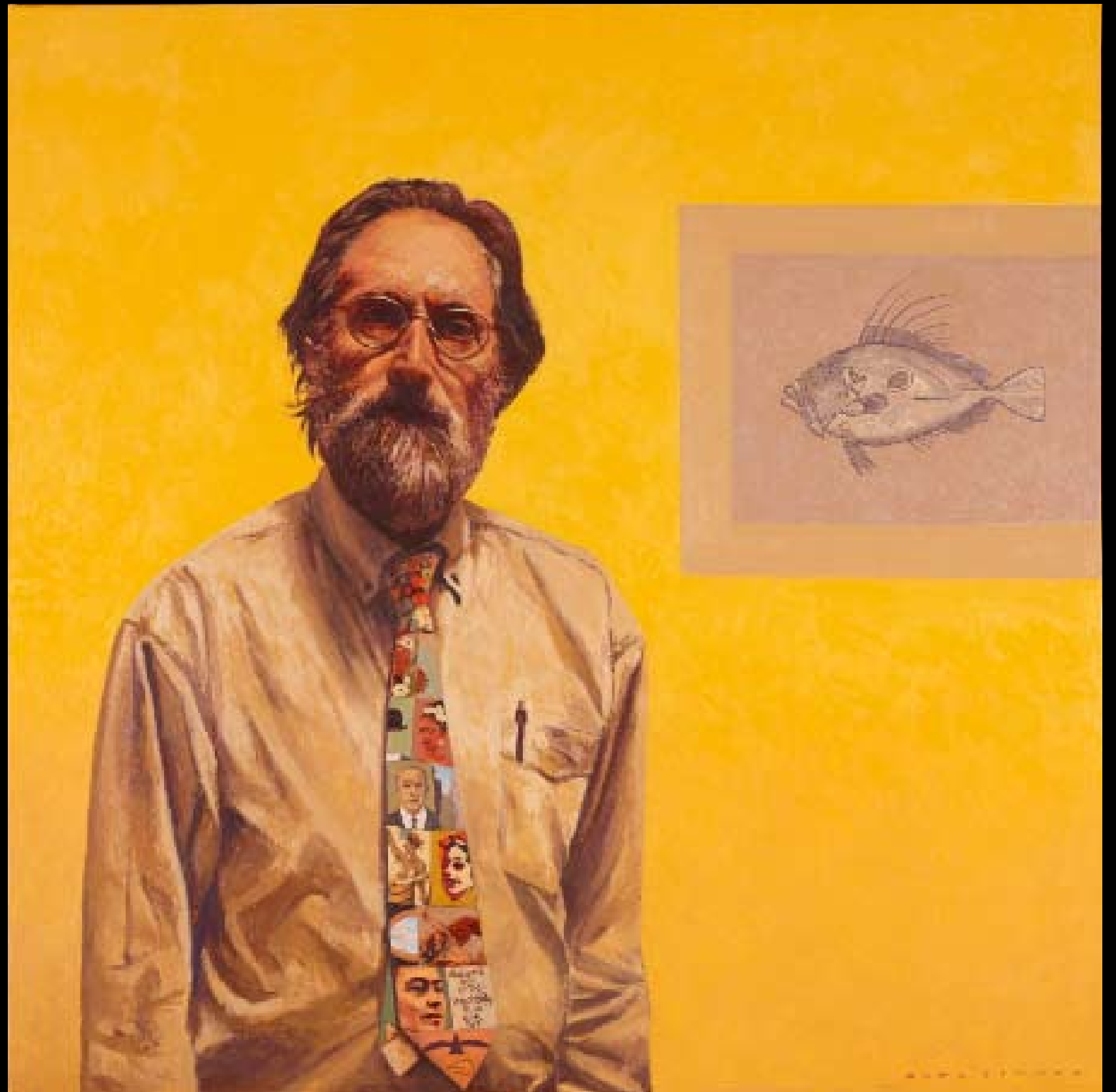


Humour

For some time, I have **changed my thinking** to giving thanks for the life I've had rather than always wanting something...

GREG SOMERS

Greg Somers
Self portrait with the picture
of Dory in grey
water mixable oil on canvas



Pattern and rhythm

Thirty-six years later,
I embrace a **hybrid identity**
and trans-cultural life as a
Chinese-Malaysian/Welsh
and Australian artist...

KATE BEYNON

Kate Beynon
Self portrait with guardian spirits
acrylic on linen



On the move

Danie Mellor makes such interesting comment on the complex relationship between Indigenous and non-Indigenous cultures. Because he has a foot in both camps, he **embodies** what Australia is.

PAUL RYAN

Paul Ryan
Danie Mellor, true blue country
oil on linen



Surface quality

His head was covered with a headdress. His eyes had experienced many vicissitudes of life and were filled with pain and kindness. This was my **immediate impression** of him.

APPLE YIN

Apple Yin
The previous life
oil on canvas



2010 ARCHIBALD PRIZE

Sponsors



Archibald, Wynne and Sulman Prizes 27 March – 30 May 10

www.thearchibaldprize.com.au

Further information on the exhibition and K-6 & 7-12

Education programs and resources:

The Archibald Prize is Australia's most popular art event. Combined with the Wynne and Sulman prizes, lively debate and controversy are assured.
\$5 PER STUDENT FOR BOOKED SCHOOL GROUPS

Art adventure tour: Let's face it

Meet the famous faces and discover the techniques used by contemporary portrait artists to capture their sitter's personality and identity. A one-hour tour with the children's guides.
Available for Years 3 to 6 between 27 March 2010 – 30 May 2010
• Tuesday to Friday • Cost: free with \$5 exhibition entry

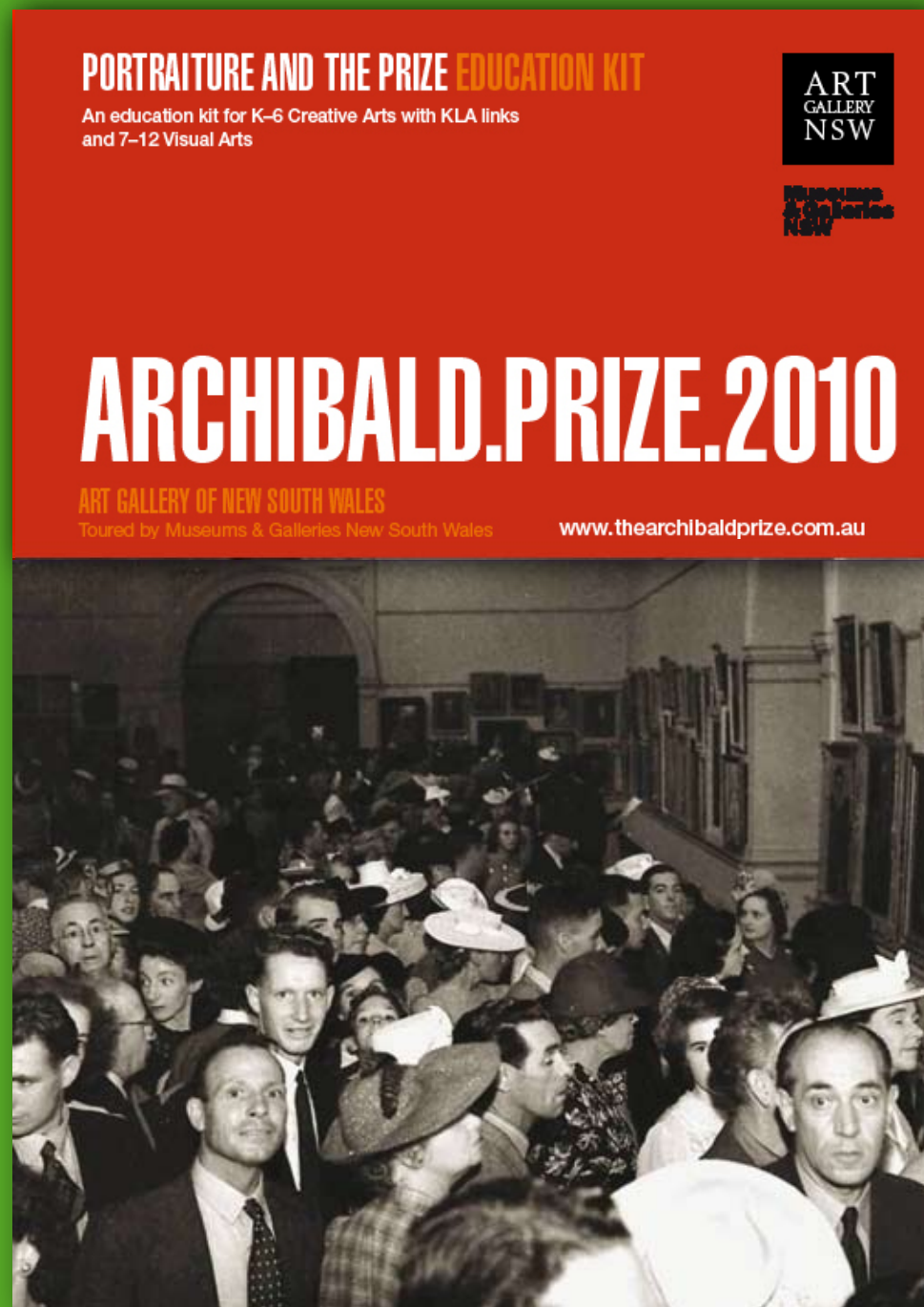
An eye on the prize Study mornings

Investigate the current and previous Archibald exhibitions and the often controversial history of the prize.
Available for Years 7 to 12 between 30 March 2010 – 14 May 2010
From 10.30am to 11.30am • Years 7-9: 21 & 29 April, 4 & 14 May 2010
• Years 10-12: 30 March 2010 • Cost: \$8 per student

Collection discussion tour: Reading the portrait

A one-hour tour of portraits in the Gallery's permanent collection.
Available for Years 7 to 10 between 29 March 2010 to 28 May 2010
Monday to Friday • Cost: \$165 per group of 15 or less (exhibition entry not included)

Bookings and pre-payment essential for all programs
tel: 02 9225 1740 fax: 02 9225 1842
pp@ag.nsw.gov.au



Archibald Prize 2010 Education Kit

This slide show is based on the Archibald Prize 2010 online education kit. The education kit is divided into three sections:

Section 1 General

The Archibald Prize and Portraiture

Section 2 Syllabus Connections

The Archibald Prize and Portraiture

Section 3 Syllabus Connections

2010 Archibald Prize

www.thearchibaldprize.com.au/education/kit

2010 Archibald Prize Regional Tour

Museums & Galleries NSW (M&G NSW) is the key development agency for the museum and gallery sector in NSW.

This year, the 2010 Archibald Prize NSW Regional Tour travels to seven galleries across New South Wales, offering teachers and students opportunities to engage with their local gallery through an accessible educational resource.

www.mgnsw.org.au

Goulburn Regional Art Gallery
11 June 2010 – 11 July 2010

Wagga Wagga Art Gallery
22 July 2010 – 22 August 2010

Tamworth Regional Gallery
30 August 2010 – 24 September 2010

Coffs Harbour Regional Gallery
4 October 2010 – 27 October 2010

Muswellbrook Regional Arts Centre
4 November 2010 – 5 December 2010

Shoalhaven City Arts Centre
14 December 2010 – 18 January 2011

Albury Art Gallery
27 January 2011 – 3 March 2011

Tour dates are subject to change. Please contact venues for confirmation of dates.



Acknowledgements

Slide show

Produced by the Public Programs Department

© Art Gallery of New South Wales 2010

Art Gallery of New South Wales
Art Gallery Road, The Domain,
Sydney 2000, Australia
pp@nsw.gov.au
www.artgallery.nsw.gov.au/education

All text cited can be located in the
online Archibald Prize 2010 education kit

All quotes by the 2010 finalists can be
located in the Archibald Prize 2010 catalogue,
Art Gallery of New South Wales 2010

ARCHIBALD.PRIZE

ART
GALLERY
NSW