

Loans protected under the Protection of Cultural Objects on Loan Act 2013

Approved borrowing institution: Art Gallery of NSW

Exhibition

Heaven and Earth in Chinese Art: treasures from the National Palace Museum, Taipei

Venue and dates

Art Gallery of New South Wales, Art Gallery Rd, Domain, Sydney, New South Wales, Australia, 2000, 02 Feb 2019 - 05 May 2019

Lender

National Palace Museum, Taipei

Map of the Heavens from the album Orthodoxy of Rule Through the Ages

Ming dynasty 1368 - 1644

hanging scroll; silk

224.8 x 135.4 cm



Provenance

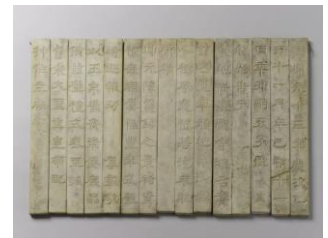
National Palace Museum Collection

Edict tables of Emperor Xuanzong

Tang dynasty 618 - 907

marble

2.8 x 29.9 x 45.3 cm



Provenance

Gifted in 1971. This set of tablets was unearthed from the foundation of the Wenfeng pagoda, at Tai'an, Shandong province in eastern China in 1931 by General Ma Hongkui (1892-1970)'s army, mentioned in an article published in the Beiping Chenbao newspaper in 1933. General Ma kept it and took it to America. In 1970, General Ma's widow, Ms Liu Muxia took it back to Taiwan and, in 1971 presented it to President Jiang Jieshi [Chiang Kai-shek], then the leader of Taiwan, to celebrate the 60th birthday of the Republic of China. It was then transferred to the National Palace Museum by the President's Office. Collection of the National Palace Museum

Loans protected under the Protection of Cultural Objects on Loan Act 2013

Approved borrowing institution: Art Gallery of NSW

Inscribed mirror with deities and beasts (25 CE—220 CE)
Warring States/Eastern Zhou circa 770 - 256 BCE/Zhou dynasty circa
1100 - 256 BCE
bronze
0.35 x 10.4 cm



Provenance

Gifted in 2015. This object was given to the NPM by Prof Ye Lisen of Taiwan University in 2015. Collection of the National Palace Museum

Zun censor with animal shaped feet and mountain designs (25 CE—
220 CE)
Warring States/Eastern Zhou circa 770 - 256 BCE/Zhou dynasty circa
1100 - 256 BCE
gilt
19.6 x 18.0 cm



Provenance

National Palace Museum Collection

Animal-shaped zun (circa 17th century)
Qing dynasty 1644 - 1911
gold- and silver-inlaid bronze
21.6 x 20.5 x 10.1 cm



Provenance

National Palace Museum Collection

Loans protected under the Protection of Cultural Objects on Loan Act 2013

Approved borrowing institution: Art Gallery of NSW

Wheeled-bird zun (1736—1795)
Qing dynasty 1644 - 1911
bronze Cloisonné
25.8 x 9.0 x 21.0 cm

Provenance
National Palace Museum Collection



An Arhat under a tree
Qianlong 1736 - 1795/Qing dynasty 1644 - 1911
jade
24 .0 x 22.0 cm

Provenance
National Palace Museum Collection



Fish-dragon shaped flower holder
Qianlong 1736 - 1795/Qing dynasty 1644 - 1911
dark-green Jade
17.0 x 11.4 cm

Provenance
National Palace Museum Collection



Ceremony of Amitāyus from the album Amitāyus
Qing dynasty 1644 - 1911
silk
57.6 x 95.0 cm

Provenance
National Palace Museum Collection



Loans protected under the Protection of Cultural Objects on Loan Act 2013
Approved borrowing institution: Art Gallery of NSW

Ceremony of Amitāyus from the album Stealing the pot
Qing dynasty 1644 - 1911
silk
57.6 x 95.0 cm



Provenance
National Palace Museum Collection

Ceremony of Amitāyus from the album Preaching in the Dragon
Palace
Qing dynasty 1644 - 1911
silk
57.6 x 95.0 cm



Provenance
National Palace Museum Collection

Portrait of the Hung-chih Emperor
Ming dynasty 1368 - 1644
hanging scroll; silk
386.6 x 188.0 cm



Provenance
National Palace Museum Collection

Loans protected under the Protection of Cultural Objects on Loan Act 2013

Approved borrowing institution: Art Gallery of NSW

Tri-Ring symbolizing Heaven, Earth, and Human
Ming dynasty 1368 - 1644
jade, nephrite
11.75 cm diam., 4.7 cm diam. of the hole



Provenance
National Palace Museum Collection

Bi disc (3200 BCE—2200 BCE)
Neolithic period 10,000 - circa 2100 BCE
jade, nephrite
4.35 x 20.9 cm



Provenance
National Palace Museum Collection

Cong tube (3200 BCE—2200 BCE)
Neolithic period 10,000 - circa 2100 BCE
jade, nephrite
47.2 cm, 7.7 - 7.8 cm width on the top, 6.8 cm, width at the bottom, 4.2
- 4.3cm diam. of the hole



Provenance
National Palace Museum Collection

Loans protected under the Protection of Cultural Objects on Loan Act 2013

Approved borrowing institution: Art Gallery of NSW

Ya-chou square zun wine vessel (13th century BCE—11th century BCE)

Shang dynasty circa 1600 - 1100 BCE

bronze

45.7 x 33.7 cm

Provenance

National Palace Museum Collection



Pengzu ding tripod vessel (12th century BCE—10th century BCE)

Shang dynasty circa 1600 - 1100 BCE

Zhou dynasty circa 1100 - 256 BCE

bronze

85.5 x 59.4 cm lip diam., 94.65 kg

Provenance

National Palace Museum Collection



Gall-bladder vase with flowers of the four seasons

Kangxi 1662 - 1722/Qing dynasty 1644 - 1911

painted enamels

13.7 x 4.1 cm

Provenance

National Palace Museum Collection



Loans protected under the Protection of Cultural Objects on Loan Act 2013

Approved borrowing institution: Art Gallery of NSW

Autumn Mountains and Red Trees
Qianlong 1736 - 1795/Qing dynasty 1644 - 1911
jade, nephrite
16.4 x 39.3 x 8.0 cm



Provenance
National Palace Museum Collection

Plum vase 18th century—19th century
Qing dynasty 1644 - 1911
copper Cloisonné
45.3 x 6.8 cm



Provenance
National Palace Museum Collection

Spittoon with seasonal flowers design on a blue background
Yongzheng 1723 - 1735/Qing dynasty 1644 - 1911
copper Cloisonné
8.1 x 9.3 cm



Provenance
National Palace Museum Collection

Vase with landscape and floral designs and two handles on a revolving neck
Qianlong 1736 - 1795/Qing dynasty 1644 - 1911
yangcai
25.0 x 12.2 cm



Provenance

Loans protected under the Protection of Cultural Objects on Loan Act 2013

Approved borrowing institution: Art Gallery of NSW

National Palace Museum Collection

Bowl with bamboo and rocks design
Yongzheng 1723 - 1735/Qing dynasty 1644 - 1911
falangcai painted enamels
15.0 x 14.2 cm



Provenance
National Palace Museum Collection

Bowl with chysanthemums design on a red brocaded ground
Qianlong 1736 - 1795/Qing dynasty 1644 - 1911
falangcai painted enamels
7.5 x 15.9 cm



Provenance
National Palace Museum Collection

Bowl with white plum blossoms design on a red ground
Yongzheng 1723 - 1735/Qing dynasty 1644 - 1911
falangcai painted enamels
7.0 x 15.1 cm



Provenance
National Palace Museum Collection

Loans protected under the Protection of Cultural Objects on Loan Act 2013

Approved borrowing institution: Art Gallery of NSW

Bowl with longevity motifs of orchids and fungi on a yellow ground
Yongzheng 1723 - 1735/Qing dynasty 1644 - 1911
falangcai painted enamels
6.0 x 12.0 cm



Provenance
National Palace Museum Collection

Flask with scenes from "The Ode on the Red Cliff"
Qing dynasty 1644 - 1911
copper Cloisonné
46.0 x 38.0 cm



Provenance
National Palace Museum Collection

Meat-shaped Stone
Qing dynasty 1644 - 1911
stone
6.6 x 7.9 x 6.6 cm



Provenance
National Palace Museum Collection

Map of the East coast of China
Qing dynasty 1644 - 1911
paper
30.5 x 2081.0 cm



Provenance
National Palace Museum Collection

Loans protected under the Protection of Cultural Objects on Loan Act 2013

Approved borrowing institution: Art Gallery of NSW

Ten color ink sticks with the Ten Views of West Lake from the collection Black-lacquered box with mother-of-pearl
Qianlong 1736 - 1795/Qing dynasty 1644 - 1911
mother-of-pearl
34.0 x 25.2 cm



Provenance
National Palace Museum Collection

Ten color ink sticks with the Ten Views of West Lake from the collection "Evening Bell at Nanping Mountain" ink stick
Qianlong 1736 - 1795/Qing dynasty 1644 - 1911
ink
1.6 x 4.7 x 4.7 cm



Provenance
National Palace Museum Collection

Ten color ink sticks with the Ten Views of West Lake from the collection "Viewing Fish and Lotus Fronds at Flower Pond" ink stick
Qianlong 1736 - 1795/Qing dynasty 1644 - 1911
ink
1.6 x 9.4 x 4.2 cm



Provenance
National Palace Museum Collection

Loans protected under the Protection of Cultural Objects on Loan Act 2013

Approved borrowing institution: Art Gallery of NSW

Ten color ink sticks with the Ten Views of West Lake from the collection "Autumn Moon over Calm Lake" ink stick
Qianlong 1736 - 1795/Qing dynasty 1644 - 1911
ink
1.5 x 10.3 x 3.3 cm

Provenance
National Palace Museum Collection



Ten color ink sticks with the Ten Views of West Lake from the collection "Twin Peaks Piercing the Clouds" ink stick
Qianlong 1736 - 1795/Qing dynasty 1644 - 1911
ink
1.6 x 10.2 x 2.9 cm

Provenance
National Palace Museum Collection



Ten color ink sticks with the Ten Views of West Lake from the collection "Three Pools Mirroring the Moon" ink stick
Qianlong 1736 - 1795/Qing dynasty 1644 - 1911
ink
1.6 x 8.0 x 4.0 cm

Provenance
National Palace Museum Collection



Loans protected under the Protection of Cultural Objects on Loan Act 2013

Approved borrowing institution: Art Gallery of NSW

Ten color ink sticks with the Ten Views of West Lake from the collection "Melting Snow on Broken Bridge" ink stick

Qianlong 1736 - 1795/Qing dynasty 1644 - 1911

ink

1.6 x 9.4 x 3.6 cm

Provenance

National Palace Museum Collection



Ten color ink sticks with the Ten Views of West Lake from the collection "Lotus in the Breeze at Crooked Countryard" ink stick

Qianlong 1736 - 1795/Qing dynasty 1644 - 1911

ink

1.5 x 7.3 x 3.5 cm

Provenance

National Palace Museum Collection



Ten color ink sticks with the Ten Views of West Lake from the collection "Listening to Orioles Singing in the Willows" ink stick

Qianlong 1736 - 1795/Qing dynasty 1644 - 1911

ink

1.6 x 6.1 x 4.7 cm

Provenance

National Palace Museum Collection



Loans protected under the Protection of Cultural Objects on Loan Act 2013

Approved borrowing institution: Art Gallery of NSW

Ten color ink sticks with the Ten Views of West Lake from the collection "Spring Dawn at Su Causeway" ink stick
Qianlong 1736 - 1795/Qing dynasty 1644 - 1911
ink
1.6 x 9.9 x 3.7 cm



Provenance
National Palace Museum Collection

Ten color ink sticks with the Ten Views of West Lake from the collection "Sunset Glow over Leifeng Pagoda" ink stick
Qianlong 1736 - 1795/Qing dynasty 1644 - 1911
ink
1.6 x 7.0 x 4.0 cm



Provenance
National Palace Museum Collection

Brush rest
Qianlong 1736 - 1795/Qing dynasty 1644 - 1911
ge ware porcelain
9.3 cm



Provenance
National Palace Museum Collection

Loans protected under the Protection of Cultural Objects on Loan Act 2013

Approved borrowing institution: Art Gallery of NSW

Inkstone and a lid with a natural landscape pattern
Qing dynasty 1644 - 1911
songhua stone
2.8 x 11.9 x 9.9 cm



Provenance
National Palace Museum Collection

Covered jar with landscape scenes
Qianlong 1736 - 1795/Qing dynasty 1644 - 1911
copper Cloisonné
19.9 x 13.8 cm



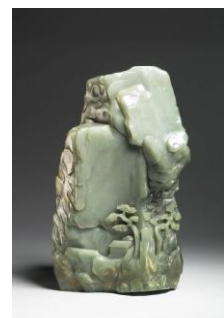
Provenance
National Palace Museum Collection

Bowl with Tiger Hill scenery
Yongzheng 1723 - 1735/Qing dynasty 1644 - 1911
falangcai painted enamels
7.5 x 16.0 cm



Provenance
National Palace Museum Collection

Miniature mountain of Fuqiu Peak
Qianlong 1736 - 1795/Qing dynasty 1644 - 1911
jade, nephrite
34.7 x 15.8 x 17.2 cm



Provenance
National Palace Museum Collection

Loans protected under the Protection of Cultural Objects on Loan Act 2013

Approved borrowing institution: Art Gallery of NSW

Phoenix-tail vase with figures and landscapes
Kangxi 1662 - 1722/Qing dynasty 1644 - 1911
underglaze-blue
67.3 x 19.5 cm

Provenance
National Palace Museum Collection



Vase decorated with a landscape
Kangxi 1662 - 1722/Qing dynasty 1644 - 1911
porcelain
44.7 x 12.0 cm

Provenance
National Palace Museum Collection



Basin decorated with floral scrolls and waves
Yongle 1403 - 1424/Ming dynasty 1368 - 1644
porcelain
12.0 x 26.6 cm

Provenance
National Palace Museum Collection



Loans protected under the Protection of Cultural Objects on Loan Act 2013

Approved borrowing institution: Art Gallery of NSW

Lao-tzu's Tao Te Ching from the album Lao-tzu's Tao Te Ching
Ming dynasty 1368 - 1644
paper
22.0 x 10.5 cm



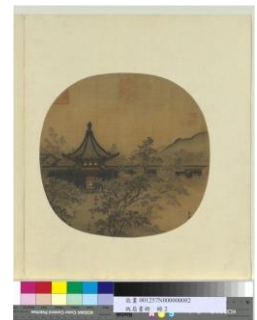
Provenance
National Palace Museum Collection

Ox Lowing on a Willow Bank
Song dynasty 960 - 1279
album leaf, paper
40.6 x 69.0 cm



Provenance
National Palace Museum Collection

Evening Stroll by Lamplight
Song dynasty 960 - 1279
album leaf
40.1 x 67.5 cm



Provenance
National Palace Museum Collection

Eight horses
Qing dynasty 1644 - 1911
hanging scroll; silk
193.0 x 58.4 cm



Provenance
National Palace Museum Collection

Loans protected under the Protection of Cultural Objects on Loan Act 2013

Approved borrowing institution: Art Gallery of NSW

Viewing Geese at Orchid Pavilion
Song dynasty 960 - 1279
hand scroll; paper
24.7 x 82.1 cm



Provenance
National Palace Museum Collection

Rubbing of a Stele with Eighteen Calligraphic Scripts
Song dynasty 960 - 1279
hanging scroll; paper
226.0 x 83.8 cm



Provenance
1978 purchased from Ting Nien-hsien. Collection of the National
Palace Museum

Central panel in cursive script
Qing dynasty 1644 - 1911
hanging scroll; paper
230.0 x 65.0 cm



Provenance
1983 gifted by Zhang Decui. Collection of the National Palace
Museum

Loans protected under the Protection of Cultural Objects on Loan Act 2013

Approved borrowing institution: Art Gallery of NSW

Three Friends of Winter
Song dynasty 960 - 1279
album leaf, paper
83.5 x 61.6 cm

Provenance
National Palace Museum Collection



Four Abridged Phrases from "Detailed Ceremonials"
Yuan dynasty 1279 - 1368
hanging scroll; paper
234.0 x 48.4 cm

Provenance
National Palace Museum Collection



Revolving vase with fish design
Qianlong 1736 - 1795/Qing dynasty 1644 - 1911
porcelain
23.5 x 5.2 cm

Provenance
National Palace Museum Collection



Peaches on plate
Qing dynasty 1644 - 1911
porcelain, wood
15.0 x 14.8 cm

Provenance
National Palace Museum Collection



Loans protected under the Protection of Cultural Objects on Loan Act 2013

Approved borrowing institution: Art Gallery of NSW

Foshou fruit on plate
porcelain, wood
11.5 x 15.0 cm

Provenance
National Palace Museum Collection



Meiping vase with winter landscape and imperial poem
Qianlong 1736 - 1795/Qing dynasty 1644 - 1911
porcelain
19.8 x 5.0 cm

Provenance
National Palace Museum Collection



Brush holder with design of figures plucking lotus blossoms
Qing dynasty 1644 - 1911
jade, nephrite
16.8 x 16.5 cm

Provenance
National Palace Museum Collection



Loans protected under the Protection of Cultural Objects on Loan Act 2013

Approved borrowing institution: Art Gallery of NSW

Miniature mountain with a scene of viewing a waterfall
Qianlong 1736 - 1795/Qing dynasty 1644 - 1911
jade, nephrite
11.2 x 22.3 x 4.5 cm

Provenance
National Palace Museum Collection



Brush washer in the shape of lotus leaves
Qing dynasty 1644 - 1911
jade, nephrite
13.8 x 25.8 x 14.2 cm

Provenance
National Palace Museum Collection



Brush washer in the shape of a pond
Qing dynasty 1644 - 1911
jade, nephrite
3.2 x 15.4 x 22.42 cm

Provenance
National Palace Museum Collection



Toad
Qing dynasty 1644 - 1911
jade, nephrite
4.0 x 6.1 x 5.5 cm

Provenance
National Palace Museum Collection



Loans protected under the Protection of Cultural Objects on Loan Act 2013

Approved borrowing institution: Art Gallery of NSW

Brush washer in the shape of a lotus leaf circa 17th century

Qing dynasty 1644 - 1911

bamboo

6.4 x 15.3 x 7.9 cm

Provenance

National Palace Museum Collection



Bowl in the shape of a lotus

Northern Song 960 - 1127/Song dynasty 960 - 1279

porcelain

10.4 x 16.2 cm

Provenance

National Palace Museum Collection



Square curio box with multiple treasures from the collection

Square curio box with multiple treasures

Qianlong 1736 - 1795/Qing dynasty 1644 - 1911

wood

25.2x 25.4 x 19.9 cm

Provenance

National Palace Museum Collection



Loans protected under the Protection of Cultural Objects on Loan Act 2013

Approved borrowing institution: Art Gallery of NSW

Cup with wooden stand from the collection Square curio box with multiple treasures

Qianlong 1736 - 1795/Qing dynasty 1644 - 1911

jade, nephrite, wood

2.6 x 4.5 cm



Provenance

National Palace Museum Collection

Zun in elephant shape with wooden stand from the collection Square curio box with multiple treasures

Qianlong 1736 - 1795/Qing dynasty 1644 - 1911

jade, nephrite, wood

8.3 x 7.3 x 3.3 cm



Provenance

National Palace Museum Collection

Tiger with wooden stand from the collection Square curio box with multiple treasures

Qianlong 1736 - 1795/Qing dynasty 1644 - 1911

jade, nephrite, wood

5.7 x 4.3 cm



Provenance

National Palace Museum Collection

Loans protected under the Protection of Cultural Objects on Loan Act 2013

Approved borrowing institution: Art Gallery of NSW

Bodhidharma with wooden stand from the collection Square curio box with multiple treasures

Qianlong 1736 - 1795/Qing dynasty 1644 - 1911

jade, nephrite, wood

5.7 cm



Provenance

National Palace Museum Collection

Xi with wooden stand from the collection Square curio box with multiple treasures

Qianlong 1736 - 1795/Qing dynasty 1644 - 1911

jade, nephrite, wood

2.0 x 5.45 x 1.5 cm



Provenance

National Palace Museum Collection

Horse with wooden stand from the collection Square curio box with multiple treasures

Qianlong 1736 - 1795/Qing dynasty 1644 - 1911

jade, nephrite, wood

3.7 x 5.5 cm



Provenance

National Palace Museum Collection

Loans protected under the Protection of Cultural Objects on Loan Act 2013

Approved borrowing institution: Art Gallery of NSW

Deer from the collection Square curio box with multiple treasures
Qianlong 1736 - 1795/Qing dynasty 1644 - 1911
jade, nephrite
5.21 x 6.64 x 3.05 cm



Provenance
National Palace Museum Collection

Spittoon with wooden stand from the collection Square curio box with
multiple treasures
Qianlong 1736 - 1795/Qing dynasty 1644 - 1911
jade, nephrite, wood
2.62 x 4.2 cm



Provenance
National Palace Museum Collection

Cup with dragon decoration with wooden stand from the collection
Square curio box with multiple treasures
Qianlong 1736 - 1795/Qing dynasty 1644 - 1911
porcelain, wood
3.3 x 5.0 cm



Provenance
National Palace Museum Collection

Loans protected under the Protection of Cultural Objects on Loan Act 2013

Approved borrowing institution: Art Gallery of NSW

Cup with dragon decoration with wooden stand from the collection
Square curio box with multiple treasures
Qianlong 1736 - 1795/Qing dynasty 1644 - 1911
porcelain
3.3 x 5.0 cm



Provenance
National Palace Museum Collection

Duanshi rectangle inkstone and a lid with inlaid jade from the collection
Square curio box with multiple treasures
Qianlong 1736 - 1795/Qing dynasty 1644 - 1911
stone, wood
1.3 x 5.3 x 8.5 cm



Provenance
National Palace Museum Collection

Water container with gold plated spoon from the collection
Square curio box with multiple treasures
Qianlong 1736 - 1795/Qing dynasty 1644 - 1911
copper, wood
2.7 x 4.4 cm

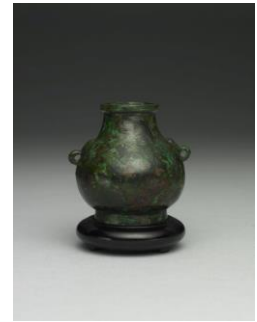


Provenance
National Palace Museum Collection

Loans protected under the Protection of Cultural Objects on Loan Act 2013

Approved borrowing institution: Art Gallery of NSW

Ewer with animal shaped ears and wooden stand from the collection
Square curio box with multiple treasures
Qianlong 1736 - 1795/Qing dynasty 1644 - 1911
copper, wood
5.95 x 5.34 cm



Provenance
National Palace Museum Collection

Ewer with animal shaped ears and wooden stand from the collection
Square curio box with multiple treasures
Qianlong 1736 - 1795/Qing dynasty 1644 - 1911
copper, wood
5.4 x 4.4 cm



Provenance
National Palace Museum Collection

Box with wooden stand from the collection Square curio box with
multiple treasures
Qianlong 1736 - 1795/Qing dynasty 1644 - 1911
agate, wood
2.8 x 3.8 cm



Provenance
National Palace Museum Collection

Loans protected under the Protection of Cultural Objects on Loan Act 2013

Approved borrowing institution: Art Gallery of NSW

Thumb ring with wooden stand from the collection Square curio box with multiple treasures

Qianlong 1736 - 1795/Qing dynasty 1644 - 1911

wood

2.4 x 2.9 cm



Provenance

National Palace Museum Collection

Pendant with wooden stand from the collection Square curio box with multiple treasures

Qianlong 1736 - 1795/Qing dynasty 1644 - 1911

amber, wood

2.0 x 6.5 x 2.5 cm



Provenance

National Palace Museum Collection

Ring from the collection Square curio box with multiple treasures

Qianlong 1736 - 1795/Qing dynasty 1644 - 1911

ruby, gold

3.0 x 2.3 cm



Provenance

National Palace Museum Collection

Loans protected under the Protection of Cultural Objects on Loan Act 2013

Approved borrowing institution: Art Gallery of NSW

Dog with wooden stand from the collection Square curio box with multiple treasures

Qianlong 1736 - 1795/Qing dynasty 1644 - 1911

jade, nephrite, wood

3.2 x 7.9 x 3.8 cm



Provenance

National Palace Museum Collection

Washer in the shape of lotus and wooden stand from the collection

Square curio box with multiple treasures

Qianlong 1736 - 1795/Qing dynasty 1644 - 1911

jade, nephrite

2.17 x 8.86 x 5.52 cm



Provenance

National Palace Museum Collection

Paperweight from the collection Square curio box with multiple treasures

Qianlong 1736 - 1795/Qing dynasty 1644 - 1911

jade, nephrite

0.91 x 7.32 x 1.92 cm



Provenance

National Palace Museum Collection

Loans protected under the Protection of Cultural Objects on Loan Act 2013

Approved borrowing institution: Art Gallery of NSW

Paperweight from the collection Square curio box with multiple treasures

Qianlong 1736 - 1795/Qing dynasty 1644 - 1911

jade, nephrite

0.91 x 7.36 x 1.91 cm



Provenance

National Palace Museum Collection

Camel with wooden stand from the collection Square curio box with multiple treasures

Qianlong 1736 - 1795/Qing dynasty 1644 - 1911

jade, nephrite, wood

3.1 x 2.98 x 6.35 cm



Provenance

National Palace Museum Collection

Flower-shaped pendant from the collection Square curio box with multiple treasures

Qianlong 1736 - 1795/Qing dynasty 1644 - 1911

jade, nephrite, wood

1.6 x 5.9 cm



Provenance

National Palace Museum Collection

Loans protected under the Protection of Cultural Objects on Loan Act 2013

Approved borrowing institution: Art Gallery of NSW

Disc with dragon decoration from the collection Square curio box with multiple treasures

Qianlong 1736 - 1795/Qing dynasty 1644 - 1911

jade, nephrite

0.6 x 18.9 cm



Provenance

National Palace Museum Collection

after Guan ware (China)

Bottle from the collection Square curio box with multiple treasures

Qianlong 1736 - 1795/Qing dynasty 1644 - 1911

porcelain, wood

5.3 cm



Provenance

National Palace Museum Collection

attrib. Zhao Ji (Emperor Huizong) (China, b.1101, d.1125)

Poem on Peonies in regular script

Song dynasty 960 - 1279

album leaf, paper

44.6 x 61.8 cm



Provenance

National Palace Museum Collection

Loans protected under the Protection of Cultural Objects on Loan Act 2013

Approved borrowing institution: Art Gallery of NSW

Chen Zuzhang (China)

Olive pit in the form of a boat 1737

Qianlong 1736 - 1795/Qing dynasty 1644 - 1911

olive pit

1.6 x 3.4 x 1.4 cm



Provenance

National Palace Museum Collection

court artists under the Ch'ien-lung emperor (China, active 1736-1795)

Activities of the months: the six month

Qianlong 1736 - 1795/Qing dynasty 1644 - 1911

hanging scroll; silk

320.0 x 127.6 cm



Provenance

National Palace Museum Collection

Ding ware (China)

Teabowl with partridge-feather mottles design

Northern Song 960 - 1127/Song dynasty 960 - 1279

porcelain

5.8 x 20.3 cm



Provenance

National Palace Museum Collection

Loans protected under the Protection of Cultural Objects on Loan Act 2013

Approved borrowing institution: Art Gallery of NSW

Dong Bangda (China, b.1696, d.1769)
Maple forest in fine weather after Lu Guang
Qing dynasty 1644 - 1911
hanging scroll; paper
278.0 x 76.8 cm



Provenance
National Palace Museum Collection

Dong Qichang (China, b.1555, d.1636)
Landscape after Ni Zan
Ming dynasty 1368 - 1644
hanging scroll; paper
256.0 x 76.0 cm



Provenance
National Palace Museum Collection

Emperor Qianlong (China, b.1711, d.1799)
The Classic of poetry from the Imperial Brush with Illustrations from
the album The Classic of poetry from the Imperial Brush with
Illustrations
Qianlong 1736 - 1795/Qing dynasty 1644 - 1911
paper
43.5 x 86.5 cm



Provenance
National Palace Museum Collection

Loans protected under the Protection of Cultural Objects on Loan Act 2013

Approved borrowing institution: Art Gallery of NSW

Emperor Qianlong (China, b.1711, d.1799)

The Classic of poetry from the Imperial Brush with Illustrations from the album The Classic of poetry from the Imperial Brush with Illustrations

Qianlong 1736 - 1795/Qing dynasty 1644 - 1911

paper

43.5 x 86.5 cm



Provenance

National Palace Museum Collection

Emperor Qianlong (China, b.1711, d.1799)

The Classic of poetry from the Imperial Brush with Illustrations from the album The Classic of poetry from the Imperial Brush with Illustrations

Qianlong 1736 - 1795/Qing dynasty 1644 - 1911

paper

43.5 x 86.5 cm



Provenance

National Palace Museum Collection

Feng Tayou (China, b.1021, d.1094)

Lotus Pond

Song dynasty 960 - 1279

album leaf, silk

43.0 x 75.7 cm



Provenance

National Palace Museum Collection

Loans protected under the Protection of Cultural Objects on Loan Act 2013

Approved borrowing institution: Art Gallery of NSW

Guan ware (China)
Zun in the form of an elephant
Qing dynasty 1644 - 1911
porcelain
27.5 x 25.5 cm



Provenance
National Palace Museum Collection

Guan ware (China)
Square curio box with multiple treasures from the collection Guan
ware white glazed porcelain with wooden stands
Qianlong 1736 - 1795/Qing dynasty 1644 - 1911
porcelain, wood
4.5 cm



Provenance
National Palace Museum Collection

Jiang Heng (China, b.1672, d.1743)
The Book of Changes
Qing dynasty 1644 - 1911
book, paper
32.8 x 38.2 cm



Provenance
National Palace Museum Collection

Loans protected under the Protection of Cultural Objects on Loan Act 2013

Approved borrowing institution: Art Gallery of NSW

Jiang Heng (China, b.1672, d.1743)

The Book of Changes

Qing dynasty 1644 - 1911

book, paper

32.8 x 38.2 cm



Provenance

National Palace Museum Collection

Jizhou ware (China)

Teabowl with a gold rim and leaf pattern

Southern Song 1127 - 1279/Song dynasty 960 - 1279

porcelain

5.1 x 14.5 cm



Provenance

National Palace Museum Collection

Jun ware (China)

Dish with purple splashes

Jin dynasty 1115 - 1234

Yuan dynasty 1279 - 1368

porcelain

2.9 x 18.8 cm



Provenance

National Palace Museum Collection

Loans protected under the Protection of Cultural Objects on Loan Act 2013

Approved borrowing institution: Art Gallery of NSW

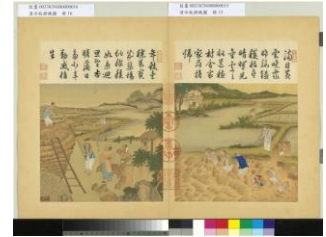
Leng Mei (China, b.1662, d.1742)

Illustrations of farming and weaving from the album Seed soaking and Ploughing

Kangxi 1662 - 1722/Qing dynasty 1644 - 1911

leafs of album, silk

38.9 x 58.5 cm



Provenance

National Palace Museum Collection

Leng Mei (China, b.1662, d.1742)

Illustrations of farming and weaving from the album Pulling up and transplanting seedlings

Kangxi 1662 - 1722/Qing dynasty 1644 - 1911

leafs of album, silk

38.9 x 58.5 cm



Provenance

National Palace Museum Collection

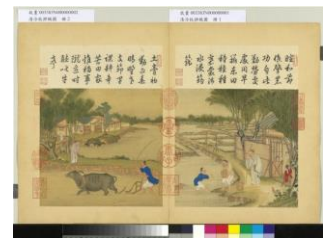
Leng Mei (China, b.1662, d.1742)

Illustrations of farming and weaving from the album Harvesting and be gathered and taken to the threshing ground

Kangxi 1662 - 1722/Qing dynasty 1644 - 1911

leafs of album, silk

38.9 x 58.5 cm



Provenance

National Palace Museum Collection

Loans protected under the Protection of Cultural Objects on Loan Act 2013

Approved borrowing institution: Art Gallery of NSW

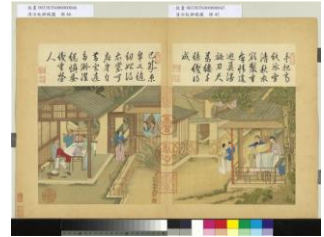
Leng Mei (China, b.1662, d.1742)

Illustrations of farming and weaving from the album Grass cutting and Tailoring

Kangxi 1662 - 1722/Qing dynasty 1644 - 1911

leafs of album, silk

38.9 x 58.5 cm



Provenance

National Palace Museum Collection

Leng Mei (China, b.1662, d.1742)

Illustrations of farming and weaving from the album

Kangxi 1662 - 1722/Qing dynasty 1644 - 1911

leafs of album, silk

38.9 x 58.5 cm



Provenance

National Palace Museum Collection

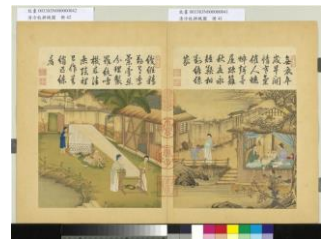
Leng Mei (China, b.1662, d.1742)

Illustrations of farming and weaving from the album

Kangxi 1662 - 1722/Qing dynasty 1644 - 1911

leafs of album, silk

38.9 x 58.5 cm



Provenance

National Palace Museum Collection

Loans protected under the Protection of Cultural Objects on Loan Act 2013

Approved borrowing institution: Art Gallery of NSW

Li Er (China, active 6th century)

Lao-tzu's Tao Te Ching from the album Lao-tzu's Tao Te Ching

Ming dynasty 1368 - 1644

paper

23.0 x 10.5 cm



Provenance

National Palace Museum Collection

Lin Liang (b.1428, d.1494)

Autumn eagle

Ming dynasty 1368 - 1644

hanging scroll; silk

136.8 x 74.8 cm



Provenance

National Palace Museum Collection

Mi Fu (China, b.1051, d.1107)

Cloudy Mountains

Song dynasty 960 - 1279

hand scroll; paper

26.7 x 204.9 cm



Provenance

National Palace Museum Collection

Qiu Ying (China, b.circa 1494, d.1552)

Fuxi from the album Orthodoxy of Rule Through the Ages

Ming dynasty 1368 - 1644

silk

40.9 x 79.1 cm



Provenance

National Palace Museum Collection

Loans protected under the Protection of Cultural Objects on Loan Act 2013

Approved borrowing institution: Art Gallery of NSW

Qiu Ying (China, b.circa 1494, d.1552)
After Chao po-ju's Alchemy painting
Ming dynasty 1368 - 1644
hanging scroll; paper
334.0 x 73.0 cm



Provenance
National Palace Museum Collection

Shen Huan (China, b.1139, d.1191)
Square curio box with multiple treasures from the collection Scroll of
scenery painting by Shenhuan with jade pin
Qianlong 1736 - 1795/Qing dynasty 1644 - 1911
hanging scroll; jade
10.5 cm



Provenance
National Palace Museum Collection

Shen Yuan (China, b.1736, d.1795)
Along the river during Qingming Festival
Qing dynasty 1644 - 1911
paper hand scroll
35.7 x 1214.2 cm



Provenance
National Palace Museum Collection

Loans protected under the Protection of Cultural Objects on Loan Act 2013

Approved borrowing institution: Art Gallery of NSW

Tang Yin (China, b.1470, d.1524)

Parting at Jinchang

Ming dynasty 1368 - 1644

hand scroll; silk,

29.4 x 147.8 cm



Provenance

National Palace Museum Collection

Wang Chengpei (China)

Spring Fortune Collected in a Brocade

Qing dynasty 1644 - 1911

hand scroll

42.0 x 778.4 cm



Provenance

National Palace Museum Collection

Wang Meng (China, active circa 1308-1385)

Hermit-Fisherman of Hua-hsi

Yuan dynasty 1279 - 1368

hanging scroll; paper

315.0 x 82.7 cm



Provenance

National Palace Museum Collection

Wang Zhongqian (China, active 1368-1398)

Celestial Beings from the album Eight Immortals Lü Dongbin and Han Zhongli

Qing dynasty 1644 - 1911

ink and color on silk

36.5 x 63.1 cm



Provenance

Loans protected under the Protection of Cultural Objects on Loan Act 2013

Approved borrowing institution: Art Gallery of NSW

National Palace Museum Collection

Wang Zhongqian (China, active 1368-1398)

Celestial Beings from the album Eight Immortals Cao Guojiu and Li Tieguai

Qing dynasty 1644 - 1911

ink and color on silk

36.5 x 63.1 cm



Provenance

National Palace Museum Collection

Wang Zhongqian (China, active 1368-1398)

Celestial Beings from the album Eight Immortals Lan Cai He and Zhang Guolao

Qing dynasty 1644 - 1911

ink and color on silk

36.5 x 63.1 cm



Provenance

National Palace Museum Collection

Wang Zhongqian (China, active 1368-1398)

Eight Immortals He Xiangyu and Han Xiangzi from the album Celestial Beings

Qing dynasty 1644 - 1911

ink and color on silk

36.5 x 63.1 cm



Provenance

National Palace Museum Collection

Loans protected under the Protection of Cultural Objects on Loan Act 2013

Approved borrowing institution: Art Gallery of NSW

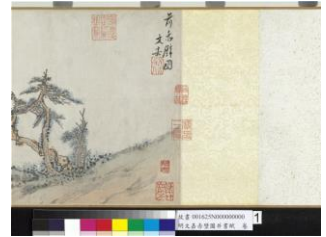
Wen Jia (China, b.1501, d.1583)

The Red Cliff and transcription of the Former Ode on the Red Cliff in running script

Ming dynasty 1368 - 1644

paper hand scroll

29.2 x 299.8 cm



Provenance

National Palace Museum Collection

Wen Zhengming (China, b.1470, d.1559)

Heavy Snow in the Mountain Passes

Ming dynasty 1368 - 1644

hand scroll; paper

25.3 x 466.0 cm



Provenance

National Palace Museum Collection

Wu Bin (China, b.1573, d.1620)

Lofty Scholars in Mountains of the Immortals

Ming dynasty 1368 - 1644

hanging scroll; paper

287.0 x 73.0 cm



Provenance

National Palace Museum Collection

Loans protected under the Protection of Cultural Objects on Loan Act 2013

Approved borrowing institution: Art Gallery of NSW

Xia Gui (d.1052)
Viewing a Waterfall
Song dynasty 960 - 1279
album leaf, paper
38.9 x 80.6 cm



Provenance
National Palace Museum Collection

Daoning Xu
Hermit with Staff Under a Pine Tree
Song dynasty 960 - 1279
album leaf, ink and colors on silk
54.0 x 83.3 cm



Provenance
National Palace Museum Collection

R Zhang Ruoai (China, b.1713, d.1746)
Ink Marvels from a Forest of Pearls (IV) from the album "Li Chun
(Spring)"
Qing dynasty 1644 - 1911
album leaf, paper
72.5 x 93.0 cm



Provenance
National Palace Museum Collection

Loans protected under the Protection of Cultural Objects on Loan Act 2013

Approved borrowing institution: Art Gallery of NSW

R Zhang Ruoi (China, b.1713, d.1746)

Ink Marvels from a Forest of Pearls (IV) from the album "Xia Zhi (Summer)"

Qing dynasty 1644 - 1911

album leaf, paper

72.5 x 93.0 cm



Provenance

National Palace Museum Collection

R Zhang Ruoi (China, b.1713, d.1746)

Ink Marvels from a Forest of Pearls (IV) from the album "Bai Lu (Autumn)"

Qing dynasty 1644 - 1911

album leaf, paper

72.5 x 93.0 cm



Provenance

National Palace Museum Collection

R Zhang Ruoi (China, b.1713, d.1746)

Ink Marvels from a Forest of Pearls (IV) from the album "Da Xue (Winter)"

Qing dynasty 1644 - 1911

album leaf, paper

72.5 x 93.0 cm



Provenance

National Palace Museum Collection

Loans protected under the Protection of Cultural Objects on Loan Act 2013

Approved borrowing institution: Art Gallery of NSW

Zhao Mengfu (China, b.1254, d.1322)

Portrait of Su Shi A01 from the album Two Odes on the Red Cliff in running script

Yuan dynasty 1279 - 1368

album leaf

36.4 x 35.7 cm



Provenance

National Palace Museum Collection

Zhao Mengfu (China, b.1254, d.1322)

Two Odes on the Red Cliff in running script 01 from the album

Yuan dynasty 1279 - 1368

album leaf

36.4 x 35.7 cm



Provenance

National Palace Museum Collection

Zhao Mengfu (China, b.1254, d.1322)

Two Odes on the Red Cliff in running script from the album Two Odes on the Red Cliff in running script

Yuan dynasty 1279 - 1368

album leaf

36.4 x 35.7 cm



Provenance

National Palace Museum Collection

Loans protected under the Protection of Cultural Objects on Loan Act 2013

Approved borrowing institution: Art Gallery of NSW

Zhao Mengfu (China, b.1254, d.1322)

Two Odes on the Red Cliff in running script 03 from the album

Yuan dynasty 1279 - 1368

album leaf

36.4 x 35.7 cm

Provenance

National Palace Museum Collection



Zhao Mengfu (China, b.1254, d.1322)

Two Odes on the Red Cliff in running script 04 from the album Two

Odes on the Red Cliff in running script

Yuan dynasty 1279 - 1368

album leaf

36.4 x 35.7 cm

Provenance

National Palace Museum Collection



Zhao Mengfu (China, b.1254, d.1322)

Two Odes on the Red Cliff in running script 05 from the album Two

Odes on the Red Cliff in running script

Yuan dynasty 1279 - 1368

album leaf

36.4 x 35.7 cm

Provenance

National Palace Museum Collection



Loans protected under the Protection of Cultural Objects on Loan Act 2013

Approved borrowing institution: Art Gallery of NSW

Zhao Mengfu (China, b.1254, d.1322)

Two Odes on the Red Cliff in running script 06 from the album Two Odes on the Red Cliff in running script

Yuan dynasty 1279 - 1368

album leaf

36.4 x 35.7 cm



Provenance

National Palace Museum Collection

Zhao Mengfu (China, b.1254, d.1322)

Two Odes on the Red Cliff in running script 07 from the album

Yuan dynasty 1279 - 1368

album leaf

36.4 x 35.7 cm



Provenance

National Palace Museum Collection

Zhao Mengfu (China, b.1254, d.1322)

Two Odes on the Red Cliff in running script 08 from the album

Yuan dynasty 1279 - 1368

album leaf

36.4 x 35.7 cm



Provenance

National Palace Museum Collection

Loans protected under the Protection of Cultural Objects on Loan Act 2013

Approved borrowing institution: Art Gallery of NSW

Zhao Mengfu (China, b.1254, d.1322)

Two Odes on the Red Cliff in running script 09 from the album

Yuan dynasty 1279 - 1368

album leaf

36.4 x 35.7 cm

Provenance

National Palace Museum Collection



Zhao Mengfu (China, b.1254, d.1322)

Two Odes on the Red Cliff in running script 10 from the album Two

Odes on the Red Cliff in running script

Yuan dynasty 1279 - 1368

album leaf

36.4 x 35.7 cm

Provenance

National Palace Museum Collection



Zhao Mengfu (China, b.1254, d.1322)

Two Odes on the Red Cliff in running script 11 from the album

Yuan dynasty 1279 - 1368

album leaf

36.4 x 35.7 cm

Provenance

National Palace Museum Collection



Loans protected under the Protection of Cultural Objects on Loan Act 2013

Approved borrowing institution: Art Gallery of NSW

Zhao Mengfu (China, b.1254, d.1322)

Viewing the spring

Yuan dynasty 1279 - 1368

hanging scroll; paper

260.0 x 51.5 cm



Provenance

National Palace Museum Collection

Date on which this information was first published to the Gallery's website 17 September 2018. Revised date 11 January 2019.

More information: www.artgallery.nsw.gov.au/about-us/corporate-information/pcol/