

# ANNOUNCEMENT

MEDIA CONTACTS: Susanne Briggs 02 9225 1791 0412 268 320 susanneb@ag.nsw.gov.au  
Claire Martin 02 9225 1734 0414 437 588 clairem@ag.nsw.gov.au

ART  
GALLERY  
NSW

## 2011 EXHIBITIONS ART GALLERY OF NEW SOUTH WALES

### Eikoh Hosoe: Theatre of memory

UNTIL 7 AUG 2011

This exhibition brings together three seminal series by Eikoh Hosoe, a leading figure in modern Japanese photography. Taken over forty years, *Kamaitachi* (1965–68), *The Butterfly Dream* (2006) and *Ukiyo-e Projections* (2002–03) are driven by Hosoe's longstanding fascination for the revolutionary dance movement Butoh and for its charismatic founders Tatsumi Hijikata and Kazuo Ohno. Together these series epitomise his unique style that combines photography with elements of theatre, dance, film and traditional Japanese art.



Eikoh Hosoe *Ukiyo-e projections # 2–36* 2003  
© Eikoh Hosoe. Courtesy Studio Equis

### Opening of new contemporary galleries featuring the John Kaldor Family Collection

21 MAY 2011

The Art Gallery of New South Wales opens an entire new floor for contemporary art featuring the John Kaldor Family Collection. To celebrate the Gallery is organising an Open Weekend – 21 & 22 May – with free keynote talks by leading international and Australian artists, floor talks with John Kaldor and Edmund Capon, and an extensive performance and film program.

With the inclusion of the Kaldor Collection, the Gallery now holds Australia's most comprehensive representation of contemporary art from the 1960s to the present day. The first display includes key works from the Kaldor Collection and the Gallery's collections plus a number of commissioned and newly installed works of art including five vast Sol LeWitt wall drawings and paintings, and an entire painted room, a new wall work by Richard Long and a new installation by Ugo Rondinone.

The new floor of some 3,300 square metres comprises the John Kaldor Family Gallery, a suite of contemporary and modern galleries, a dedicated photography gallery, and a study room for the Gallery's work on paper collection.



The new John Kaldor Family Gallery with Sol LeWitt  
*Wall drawing #1091: arcs, circles and bands (room)* 2003  
© Estate of Sol LeWitt/ARS. Licensed by Viscopy, Sydney



Jeff Koons *White terrier* 1991, synthetic polymer paint on wood  
John Kaldor Art Collection © Jeff Koons

## 2011 EXHIBITIONS

### ART GALLERY OF NEW SOUTH WALES

---

#### CONTEMPORARY PROJECT

### Sam Smith

21 MAY – 14 AUG 2011

*Camerman* is a two-channel video installation by Sydney-based artist Sam Smith. Shot recently on location in Berlin, the work presents a curious sequence of events that take place between a film set, a cameraman's apartment and an artist's studio, involving a camera lens imbued with mystical qualities. One channel of the video conveys the action of the film set and its protagonists; the other interweaves the perspective of the film being shot – the 'film within the film'.

Sam Smith has long been interested in the capacity of moving images to manipulate our sense of time and space and to absorb viewers into fictitious realms. Having worked exclusively in video in the past, this project is the first time he has shot on both video and celluloid film, bringing a new dimension to his exploration of cinematic conventions in an era of digital production.

---



Sam Smith *Camerman* 2011, production video still  
Courtesy of the artist

### The poetry of drawing: Pre-Raphaelite designs, studies and watercolours

18 JUN – 4 SEP 2011

This exhibition is the most comprehensive survey of Pre-Raphaelite works on paper to date. All of the leading figures of the period are represented, including the original Pre-Raphaelite Brotherhood (Millais, Holman Hunt, Rossetti), Ruskin, the second-wave of

Pre-Raphaelites (including Burne-Jones, Sandys and Solomon). Works are from the collection of the Birmingham Museum and the Art Gallery of New South Wales.

---



Dante Gabriel Rossetti *Beatrice meeting Dante at a marriage feast, denies him her salutation* 1852, watercolour and bodycolour on paper. Purchased with funds provided by John Schaeffer 2003

### David Aspden

28 JUL – 4 SEP 2011

David Aspden (Australian, 1935-2005) first came to prominence in 1960s Sydney as a young gun of the local avant garde and went on to forge a long and impressive career over the next four decades. His early work, heavily influenced by international formalist and hard-edge painting, gave way to a more nuanced and lyrical abstraction inspired by music, landscape and nature, while emphasizing colour and his remarkable facility for tone. This exhibition focuses exclusively on the Art Gallery of New South Wales' collection of David Aspden's work.

---



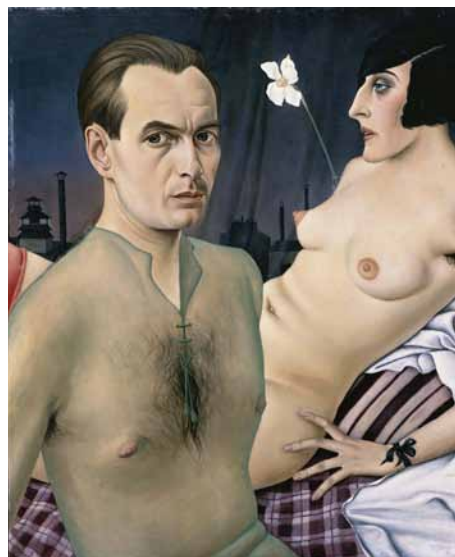
David Aspden *Meditations on landscape no 3* 1998, acrylic on paper. Collection Art Gallery of New South Wales, gift of Karen Aspden 2008 © Estate of David Aspden

## 2011 EXHIBITIONS ART GALLERY OF NEW SOUTH WALES

### The mad square: modernity in German art 1910–37

6 AUG – 6 NOV 2011

This exhibition highlights the great aesthetic innovations that were made by artists throughout Germany in painting, sculpture, graphic art, photography, film and the decorative arts during the years from 1910 to 1937. The exhibition features more than 200 representative works from museums around the world by leading artists of the period including Ernst Ludwig Kirchner, George Grosz, Otto Dix, Max Beckmann, Christian Schad, Rudolf Schlichter, Karl Hubbuch, Käthe Kollwitz, Kurt Schwitters, Hannah Höch, August Sander and László Moholy-Nagy. These works reveal the fascinating and complex ways in which artists responded to the forces of modernity and their passionate engagement with contemporary society, culture and politics.



**Christian Schad** *Self-portrait* 1927, oil on wood, 76 x 61.5 cm. Private collection, Germany. Courtesy Tate Gallery, London © Christian Schad/VG Bild-Kunst, Bonn. Licensed by Viscopy, Sydney

### Picasso: Masterpieces from the Musée National Picasso

12 NOV 2011 – 26 FEB 2012

The Art Gallery of New South Wales and Art Exhibitions Australia present a landmark exhibition of the work of Pablo Picasso (1881–1973), arguably the most radical and influential artist of the 20th century. The exhibition presents iconic works from virtually every phase of Picasso's legendary career, documenting the full range of his unceasing inventiveness and creative process.

Drawn from the collection of the Musée National Picasso in Paris – the largest and most important repository of the artist's work in the world – the exhibition will feature more than 200 extraordinary paintings, sculptures, drawings, prints and photographs. This unprecedented opportunity is possible at this time because the Musée Picasso has recently closed for renovations, allowing a global tour of this full-scale survey to travel for the first and, very likely, the only time.



**Pablo Picasso** *Portrait of Dora Maar* 1937 Collection Musée Picasso, Paris © Succession Picasso, photo © RMN/Jean-Giles Berizzi

Exhibitions and dates may be subject to change

Art Gallery of New South Wales  
Art Gallery Rd, The Domain, Sydney  
Open daily 10am to 5pm, Wednesdays until 9pm

[www.artgallery.nsw.gov.au](http://www.artgallery.nsw.gov.au)

ART  
GALLERY  
NSW